

ECC Corp. Site Removal Action 2023

Holden, MA

U.S. EPA | HAZARDOUS WASTE PROGRAM AT EPA NEW ENGLAND

THE EMERGENCY RESPONSE AND REMOVAL PROGRAM

responds to chemical, biological and radiological releases and large-scale national emergencies, including homeland security incidents. EPA conducts short term cleanups in the removal program when necessary to protect human health and the environment by either funding response actions directly or overseeing and enforcing actions conducted by potentially responsible parties.



SITE DESCRIPTION

The ECC Corp. Site is made up of four properties: the Source Property, which is where the Electronic Controls Corporation manufacturing facility operated, and three properties which have been impacted by contamination from ECC. Most recently, in July 2022, the Massachusetts Department of Environmental Protection (MassDEP), asked the U.S. Environmental Protection Agency (EPA) to take soil samples from eight residential properties next to the ECC facility and soil samples from the western and northwestern portions of the Source Property. In December 2022, EPA sampled for lead and volatile organic chemicals. Field screening and lab results found lead in soil samples above residential EPA Removal Management Levels on the Source Property and on three abutting properties.

SITE HISTORY

Site Use: The Source Property was a former electroplating manufacturing facility that was operated by Electronic Controls Corporation from the 1950s until 2005; it has been inactive since 2006. Prior to the construction of the ECC facility, a historic woolen mill operation was once located on the property. The Source Property includes a two-story brick and cinder-block manufacturing building; a paved driveway and parking area; areas of maintained lawn; and in the northwest section, a former waste lagoon, closed under the Resource Conservation and Recovery Act. The northern portion is currently undeveloped and is heavily vegetated. There are several monitoring wells located on the property due to a documented chlorinated solvent plume coming from the former waste lagoon. There are also recovery wells that are part of an ECC-operated pump-and-treat system that had been installed to address the plume; the system ceased operation in 2005.

KEY CONTACTS:

ALLYSON BOWDEN

U.S. EPA On-Scene Coordinator
617-918-1359

bowden.allyson@epa.gov

CHARLOTTE GRAY

U.S. EPA Community Involvement
Coordinator
617-918-1243

gray.charlotte@epa.gov

TOLL-FREE CUSTOMER SERVICE

1-888-EPA-7341

LEARN MORE AT:

response.epa.gov/ECC2023

continued >>

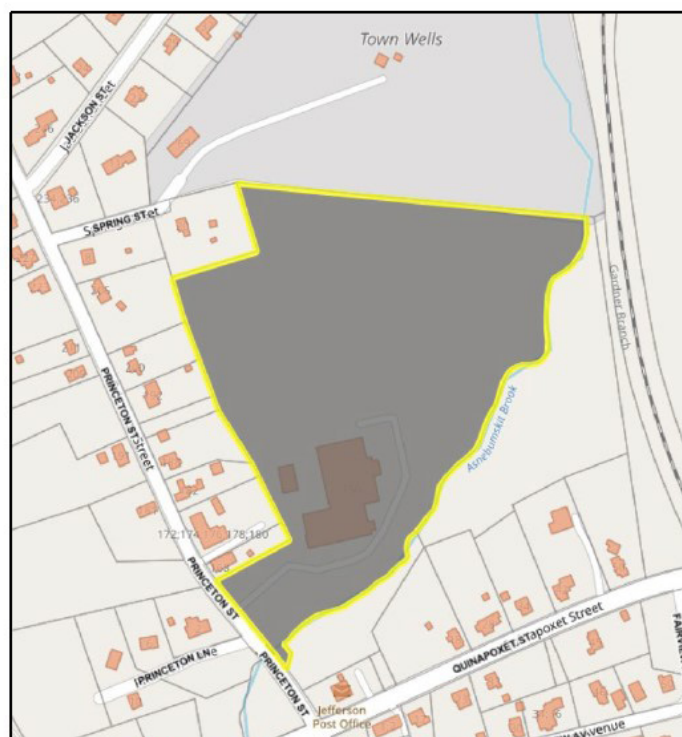


Previous EPA Actions: In 2007, EPA conducted a removal action at the Source Property which included: pumping out acid tanks and pits; removing chemicals, drums, and containers; disposing solid debris from the trenches; and removing solid debris from storage tanks.

NEXT STEPS

In late October 2023, EPA will begin the following actions to address the lead-contaminated soil:

- Mobilizing equipment;
- Clearing vegetation or debris, as needed;
- Conducting additional sampling to further determine the extent of contamination and/or assist in supporting response and disposal actions;
- Excavating soil contaminated with lead at concentrations of concern, backfilling and vegetating (grass seed, sod, etc.) as appropriate;
- Conducting dust-control and air monitoring activities;
- Performing post-excavation sampling to confirm cleanup goals have been met;
- Removing and disposing of all hazardous substances to EPA-approved off-site facility; and
- Repairing response-related damages as appropriate.



ECC Corp. (Source Property) boundary

INFORMATION ON LEAD

Lead naturally occurs in soil at low levels. Hundreds of years of human activities have increased levels of lead in soil, especially in and around urban areas and near older homes. Lead does not breakdown over time, so lead deposited in the past can still be a problem today. Lead in soil can contribute to overall environmental lead exposure. Other sources of environmental lead exposure include chipping lead-based paint, lead contaminated dust, and lead in drinking water.

Exposure to lead is a health concern, especially for young children and pregnant women. Lead can affect almost every organ and system in your body. The nervous system is the main target for lead poisoning in children and adults. Exposure to lead can cause developmental effects in children, including but not limited to reduced IQ and attention span, hyperactivity, impaired growth, and learning disability.

To learn more about lead and how to protect your family from lead exposure, contact the National Lead Information Center at: 1 (800) 424-LEAD (5323) or visit: [epa.gov/lead](https://www.epa.gov/lead)

continued >>

WHAT CAN I DO? You can take simple steps to reduce your exposure to lead in contaminated soils or dust.



Talk with EPA about testing your yard or private well



Get your child tested for lead poisoning, even if he or she seems healthy



Wash hands – especially children’s – after handling soil, playing outside, and before meals



Take shoes off at the door; clean children’s feet and pets’ paws/fur at the door



Damp (not dry) mop and dust surfaces regularly; keep toys and play areas clean



Make sure children eat nutritious meals high in iron and calcium



Practice safe gardening and wash foods grown in contaminated soil



Be aware of other sources of lead and try to minimize your overall exposure