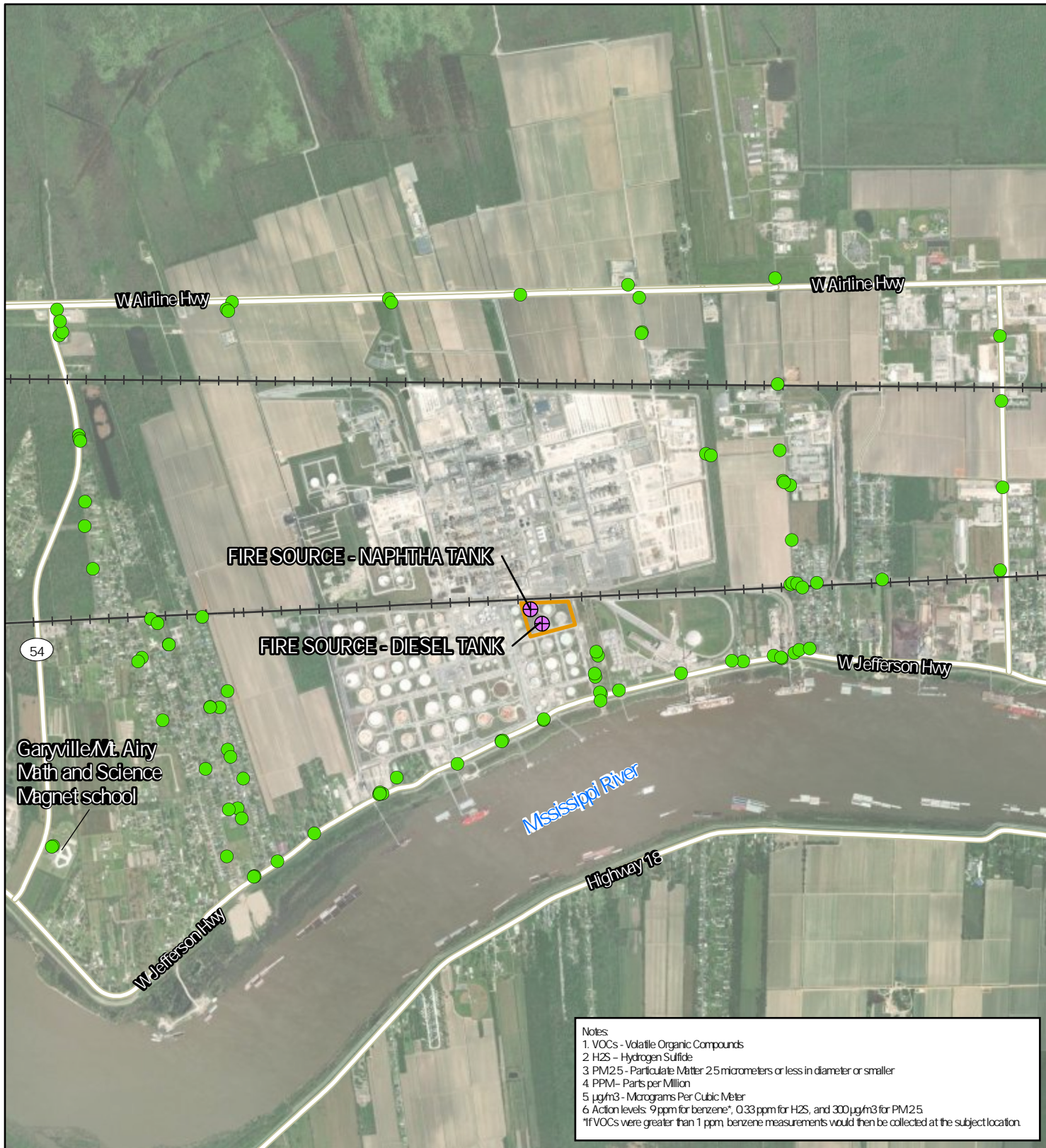


ATTACHMENT G

ROVING AIR MONITORING MAP

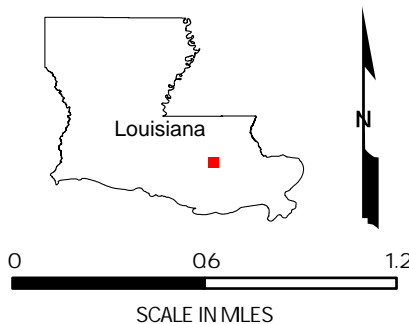


Notes:
 1. VOCs - Volatile Organic Compounds
 2. H₂S - Hydrogen Sulfide
 3. PM_{2.5} - Particulate Matter 2.5 micrometers or less in diameter or smaller
 4. PPM - Parts per Million
 5. µg/m³ - Micrograms Per Cubic Meter
 6. Action levels: 9 ppm for benzene*, 0.33 ppm for H₂S, and 300 µg/m³ for PM_{2.5}
 *If VOCs were greater than 1 ppm, benzene measurements would then be collected at the subject location.

LEGEND

- < ACTION LEVELS FOR VOCs/BENZENE, H₂S, AND PM_{2.5}
- ⊕ SOURCE LOCATION
- SECONDARY CONTAINMENT

SOURCE: WORLD IMAGERY; ESRI
 TDD No.: 0002/23-610
 FPN: UCGPE23618
 NRC: 1377238
 SSID: V6XS



US EPA REGION 6

ATTACHMENT G
 ROVING AIR MONITORING MAP
 MARATHON PETROLEUM TANK FIRE
 4663 WEST AIRLINE HIGHWAY
 GARYVILLE, ST. JOHN THE BAPTIST PARISH, LOUISIANA

DATE
OCTOBER 2023

PROJECT NO
20600.012.002.2610

SCALE
AS SHOWN