

Table 1: Weekly Perimeter Air Monitoring Summary
Allied Textile Printing Site
Paterson, Passaic County, New Jersey
September 16 through 20, 2024

Date	Air Monitoring Instrument Number	Action Level Exceeded? ¹	Work Day 15-Minute TWA Concentration Range (µg/m ³)
16-Sep-24	ASL01	N	4.9 to 23.7
	ASL02	N	0.2 to 19.9
	ASL03	N	5.1 to 10.4
	ASL04 ²	N	2 to 24.4
17-Sep-24	ASL01	N	4.9 to 23.7
	ASL02	N	15.8 to 32.8
	ASL03	N	5.6 to 21.7
	ASL04	N	22.7 to 57.8
18-Sep-24	ASL01	N	14.2 to 33.3
	ASL02	N	14.6 to 17.6
	ASL03	N	5.5 to 26.4
	ASL04	N	23.5 to 41.7
19-Sep-24	ASL01	N	23.6 to 30.1
	ASL02	N	22.9 to 57.9
	ASL03	N	9.8 to 54.7
	ASL04	Y ³	27.0 to 9,363.7
20-Sep-24	ASL01	N	3.4 to 51.5
	ASL02	N	7.6 to 13.2
	ASL03 ⁴	N	-6.3 to 14.4
	ASL04	N	7.9 to 17.2

Notes:

The EPA uses air monitors to track small particles in the air called PM₁₀, which are less than 10 micrometers in size. These particles can include dust, dirt, smoke, or asbestos fibers. The air monitors measure the average amount of PM₁₀ in the air over 15 minutes. If the amount of PM₁₀ is above 150 µg/m³, the monitors alert the EPA and workers on-site. If this happens, all site activities will stop, results are reported to the EPA, and dust control measures are re-evaluated. It's important to note that high levels of PM₁₀ do not necessarily mean there is asbestos in the air. The monitors only measure the amount of particles, not what they are made of.

Air monitoring results highlighted in YELLOW show that an air monitor measured PM₁₀ above the EPA's action level.

¹Action level utilized on-site is currently 150 µg/m³ with PM₁₀, which is compared to the average air monitoring measurement over a 15-minute period. If the action level is exceeded for a 15-minute period, on-site safety procedures are to suspend site activities, report results to the EPA On-Scene Coordinator and re-evaluated dust suppression measures.

²ASL04 DustTrak II (Serial Number 8530211314) was changed to DustTrak II (Serial Number 8530203306) due to a wireless network error. The problem persisted due to an issue with the modem. The modem was changed on Tuesday, September 17, 2024.

³This exceedance was caused by a system error and did not indicate an increase in particulate matter.

⁴ASL03 drifted negative. This run was stopped and the unit was zero calibrated. After zeroing the unit, returned to normal

Air monitoring measurements (15-minute TWA concentrations) have been averaged over the total work day.

Air monitoring is not performed during inclement weather conditions/rain and thunderstorms.

Abbreviations:

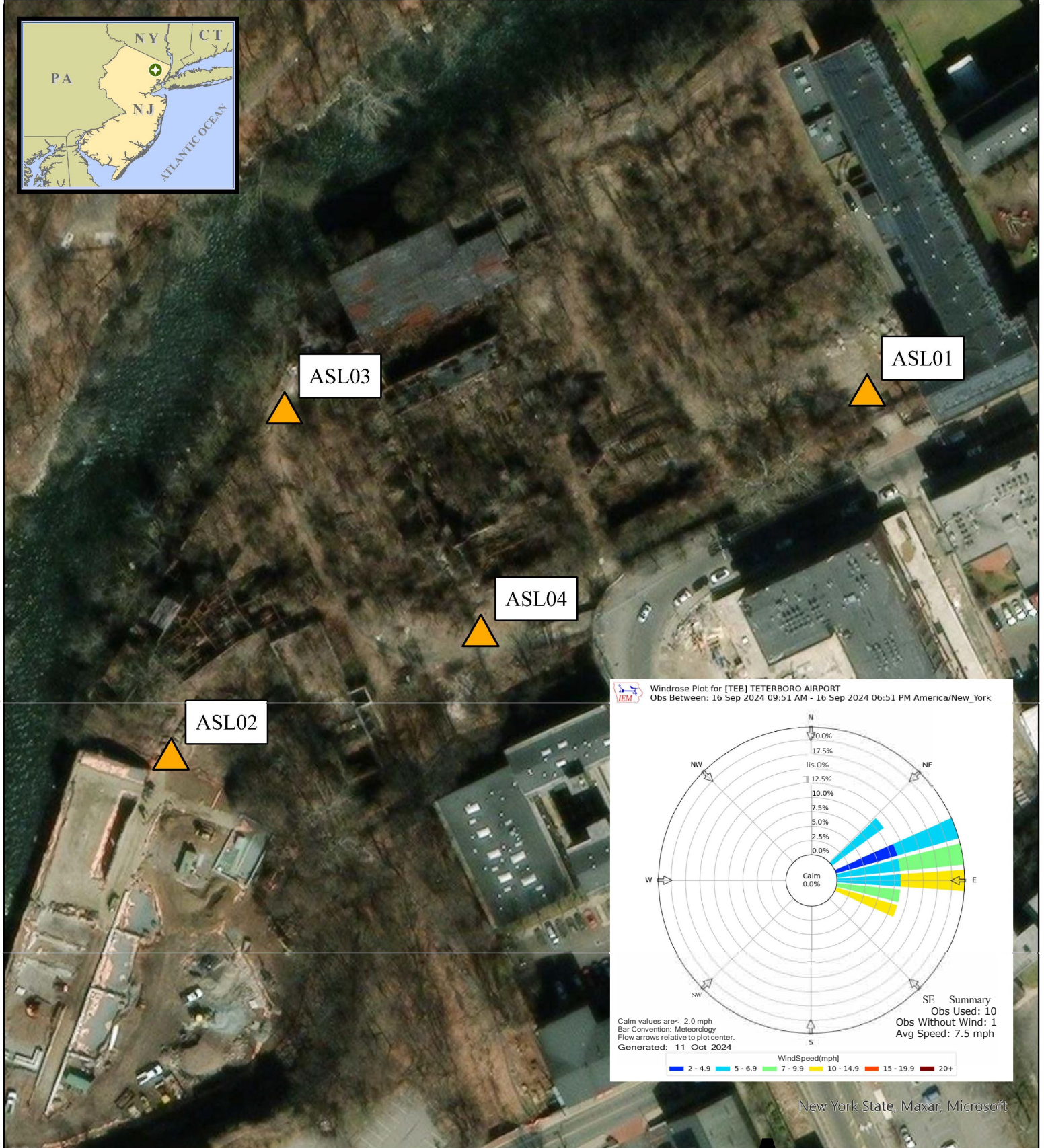
EPA - United State Environmental Protection Agency

µg/m³ - Micrograms per meter cubed


PM₁₀ - Particulate Matter, diameter 10 micrometers and smaller

TWA- Time weighted average

ASL -Air Station Location

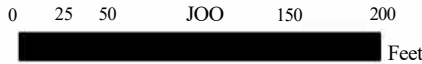


Legend

 Air Monitoring Location

Notes:

1. Air monitoring locations are approximate.
2. ASL01 (North Gate; DustTrak II serial number [SIN]: 8530104213), ASL02 (Overlook Park Lower Fence Gate; DustTrak II SIN: 8530183802), ASL03 (North River Fence; DustTrak II SIN: 8530241807), and ASL04 (Exterior Colt Gun Building; DustTrak II SIN: 8530211314 / 8530203306).
3. Air stations consist of a DustTrak II with a particulate matter smaller than 10 microns in diameter (PM10) impactor and a Gi!Air Plus for air asbestos air sampling.



A

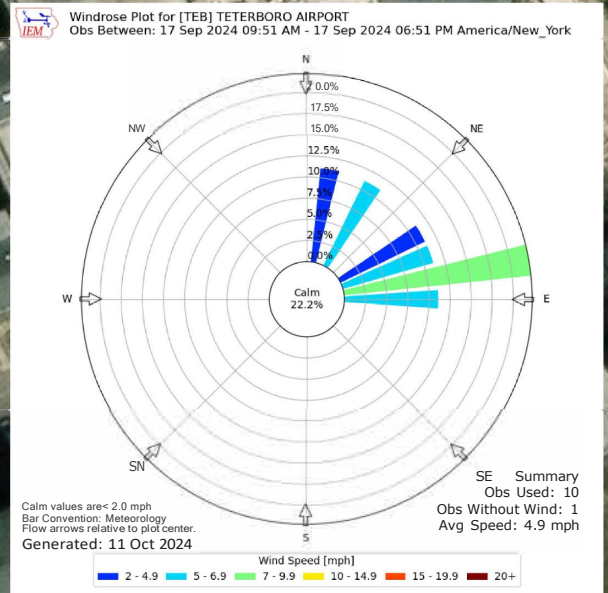
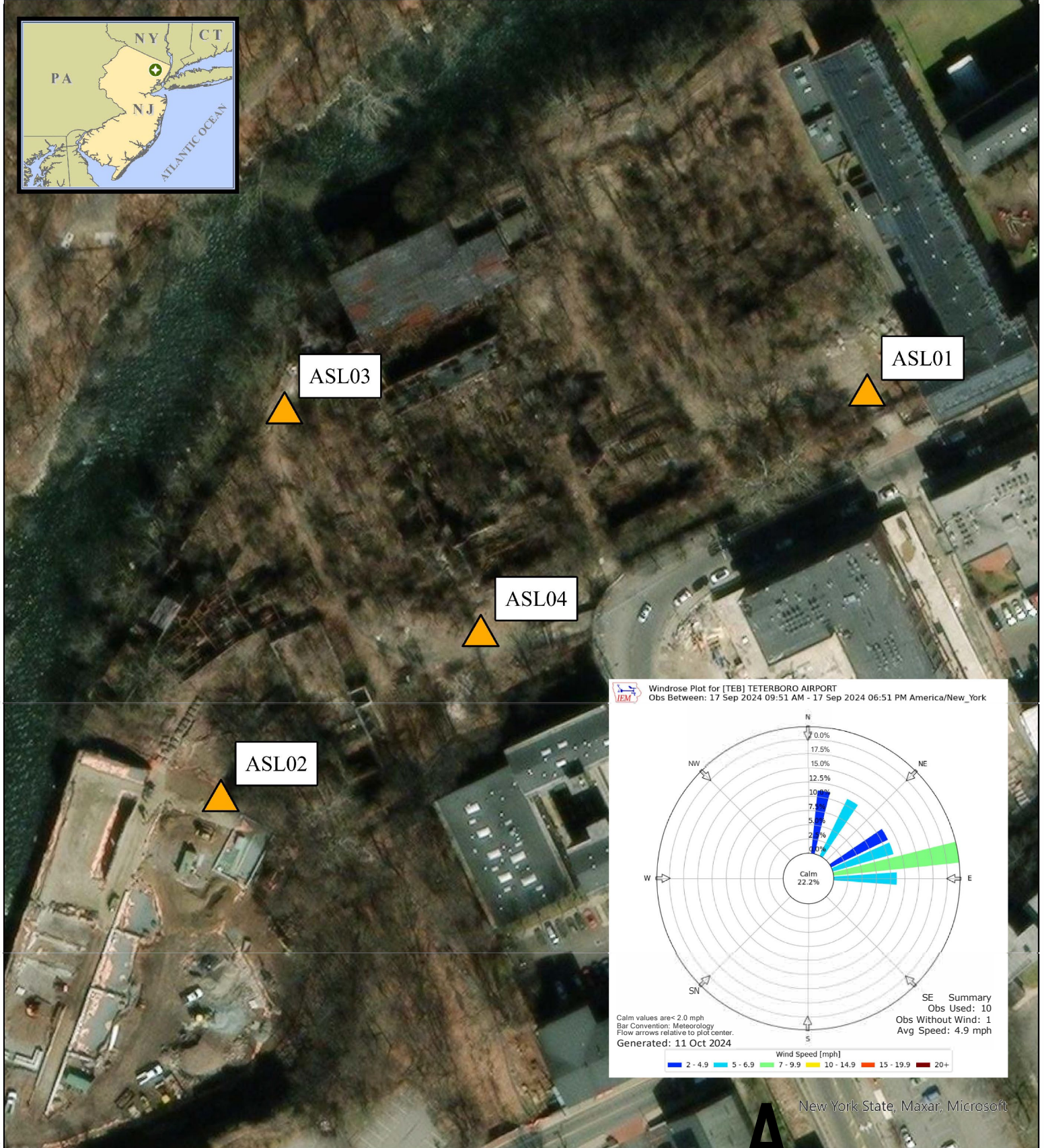
September 16, 2024 Air Monitoring Location Map

Allied Textile Printing
Paterson, New Jersey

U.S. ENVIRONMENTAL PROTECTION AGENCY
SUPERFUND TECHNICAL ASSESSMENT
& RESPONSE TEAM VI
CONTRACT# 68HE0325D0001

GISANALYST: M. Tabayo
EPAOSC: M. Tabayo
START/SPM: M. Tabayo
CHARGE#: M. Tabayo

WESTON SOLUTIONS Weston Solutions, Inc.
Federal East Division



New York State, Maxar, Microsoft

Legend



Air Monitoring Location

Notes:

1. Air monitoring locations are approximate.
2. ASL01 (North Gate; DustTrak II serial number [SIN]: 8530104213), ASL02 (Overlook Park Lower Fence Gate; DustTrak II SIN: 8530183802), ASL03 (North River Fence; DustTrak II SIN: 8530241807), and ASL04 (Exterior Colt Gun Building; DustTrak II SIN: 8530203306).
3. Air stations consist of a DustTrak II with a particulate matter smaller than 10 microns in diameter (PM10) impactor and a Gi!Air Plus for air asbestos air sampling.

0 25 50 100 150 200 Feet

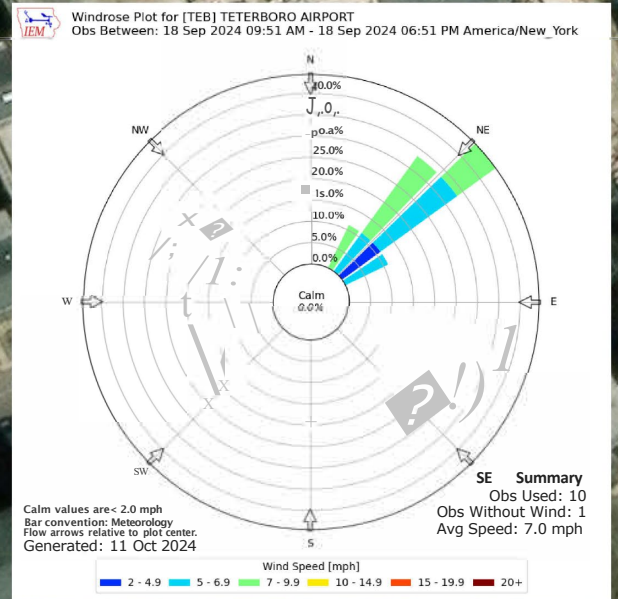
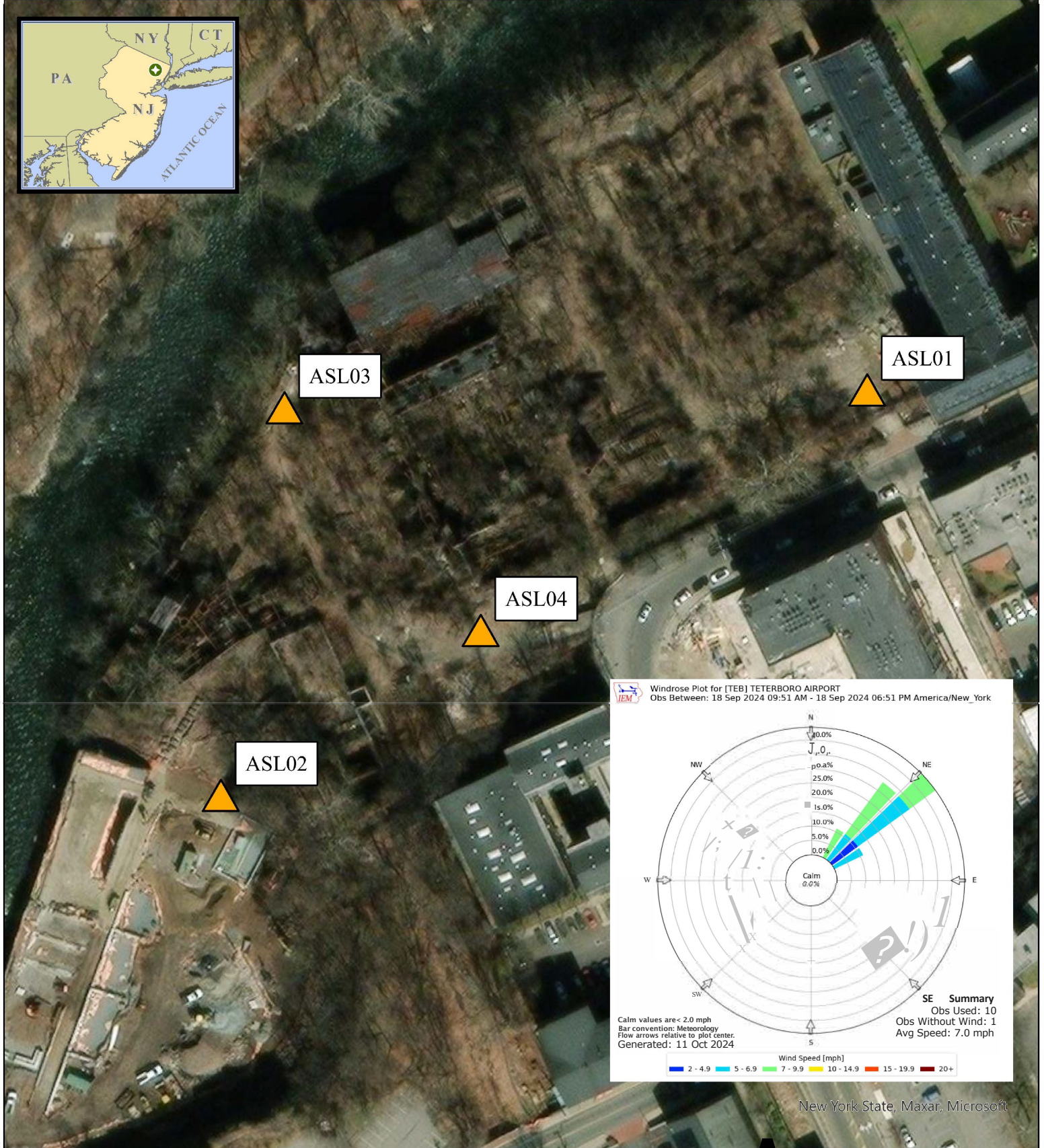
September 17, 2024 Air Monitoring Location Map

Allied Textile Printing
Paterson, New Jersey

U.S. ENVIRONMENTAL PROTECTION AGENCY
SUPERFUND TECHNICAL ASSESSMENT
& RESPONSE TEAM VI
CONTRACT# 68HE032SD0001

GISANALYST:
EPAOSC: M. Tabo'o xon g
START/VS/PM:
CHARGE#:

WESTON SOLUTIONS Weston Solutions, Inc.
Federal East Division



New York State, Maxar, Microsoft

Legend



Air Monitoring Location

Notes:

1. Air monitoring locations are approximate.
2. ASL01 (North Gate; DustTrak II serial number [SIN]: 8530104213), ASL02 (Overlook Park Lower Fence Gate; DustTrak II SIN: 8530183802), ASL03 (North River Fence; DustTrak II SIN: 8530241807), and ASL04 (Exterior Colt Gun Building; DustTrak II SIN: 8530203306).
3. Air stations consist of a DustTrak II with a particulate matter smaller than 10 microns in diameter (PM10) impactor and a Gi!Air Plus for air asbestos air sampling.

0 25 50 100 150 200 Feet

A

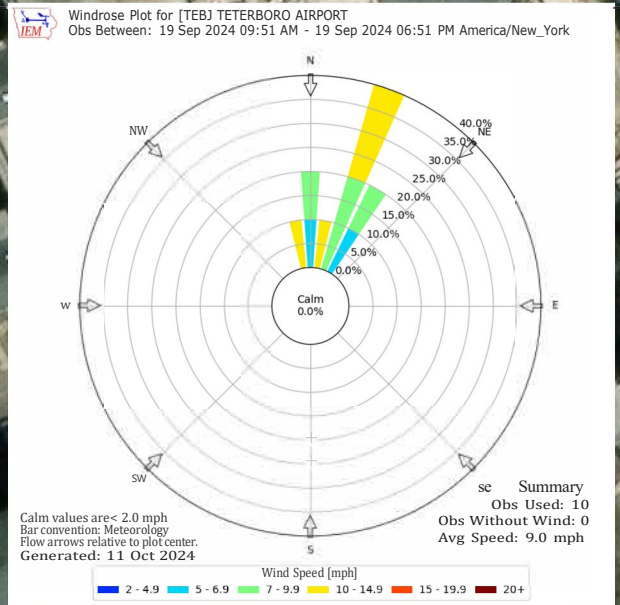
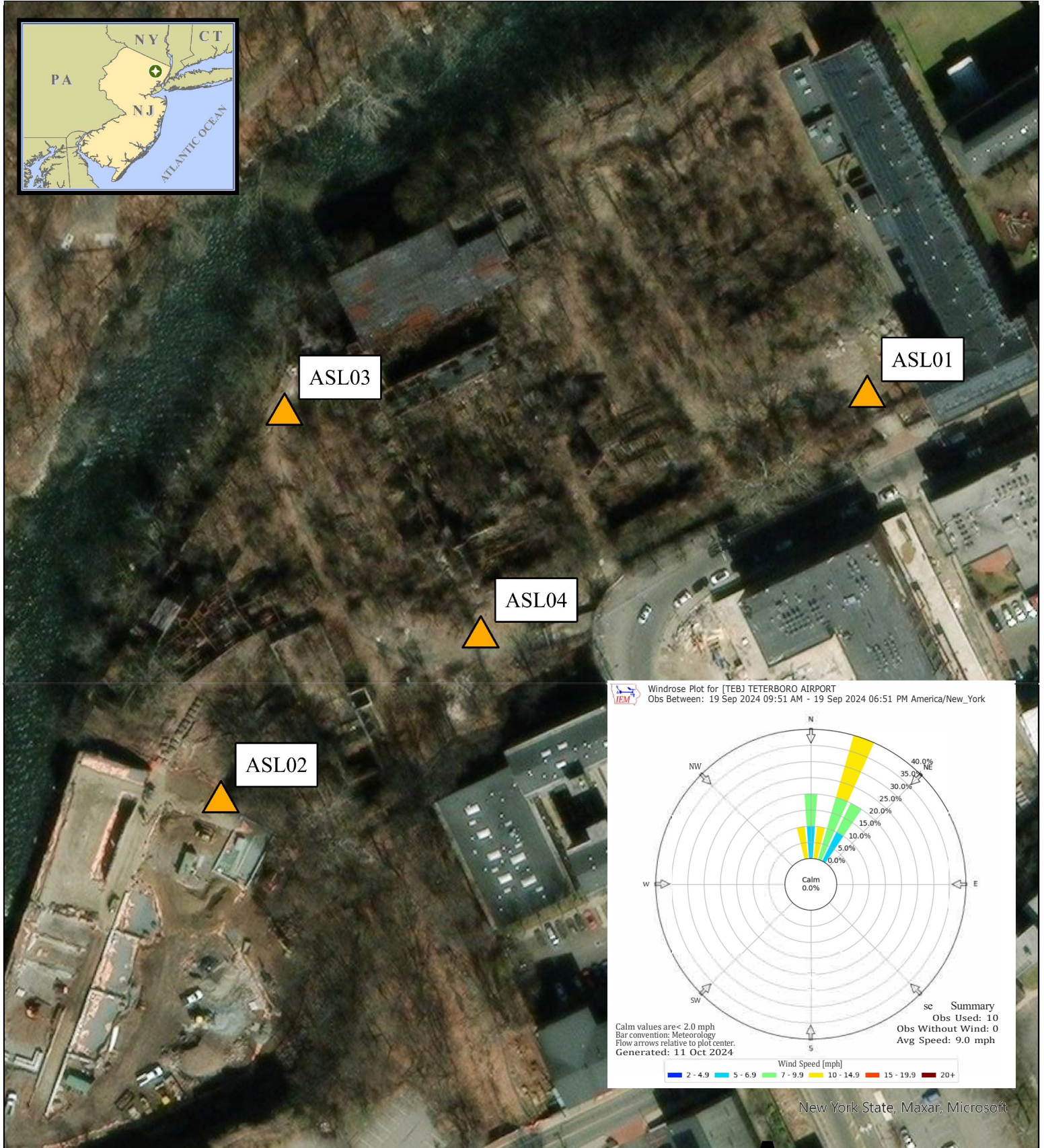
September 18, 2024 Air Monitoring Location Map

Allied Textile Printing
Paterson, New Jersey

U.S. ENVIRONMENTAL PROTECTION AGENCY
SUPERFUND TECHNICAL ASSESSMENT
& RESPONSE TEAM VI
CONTRACT# 68HE032SD0001

GIS ANALYST: _____
EPA OSC: M. Tabatabaie
START/VI SPM: _____
CHARGE#: _____

WESTON SOLUTIONS Weston Solutions, Inc.
Federal East Division



New York State, Maxar, Microsoft

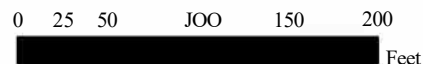
Legend



Air Monitoring Location

Notes:

1. Air monitoring locations are approximate.
2. ASL01 (North Gate; DustTrak II serial number [SIN]: 8530104213), ASL02 (Overlook Park Lower Fence Gate; DustTrak II SIN: 8530183802), ASL03 (North River Fence; DustTrak II SIN: 8530241807), and ASL04 (Exterior Colt Gun Building; DustTrak II SIN: 8530203306).
3. Air stations consist of a DustTrak II with a particulate matter smaller than 10 microns in diameter (PM10) impactor and a Gi!Air Plus for air asbestos air sampling.



A

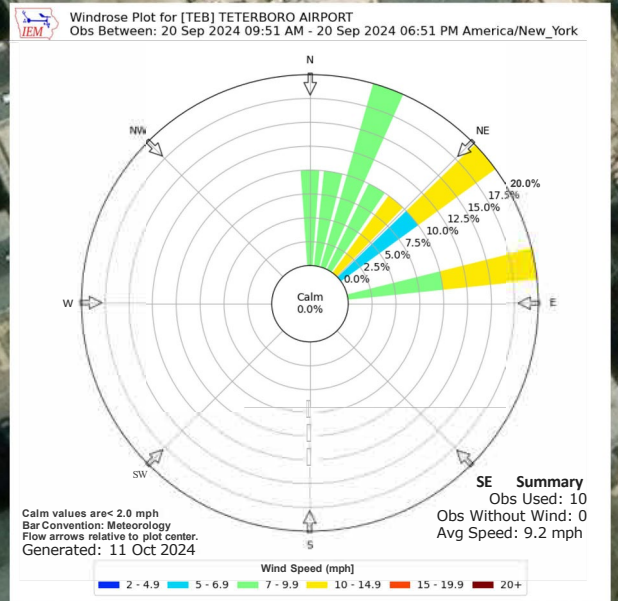
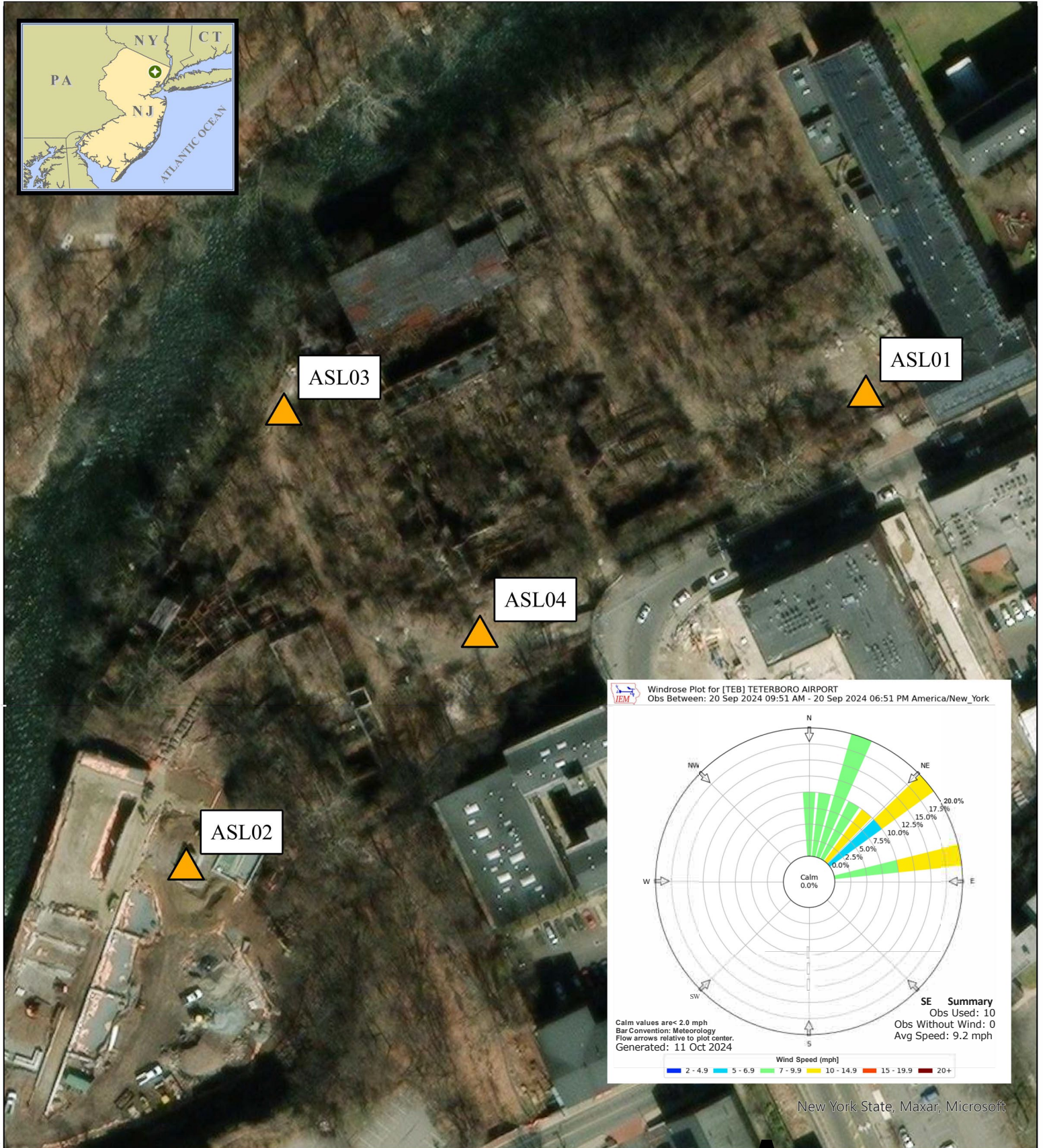
September 19, 2024 Air Monitoring Location Map

Allied Textile Printing
Paterson, New Jersey

U.S. ENVIRONMENTAL PROTECTION AGENCY
SUPERFUND TECHNICAL ASSESSMENT
& RESPONSE TEAM VI
CONTRACT# 68HE032SD0001

GISANALYST:
EPAOSC: M. Tabayo en g
START/VS/SPM:
CHARGE#:

WESTON SOLUTIONS Weston Solutions, Inc.
Federal East Division



New York State, Maxar, Microsoft

Legend



Air Monitoring Location

Notes:

- Air monitoring locations are approximate.
- ASL01 (North Gate; DustTrak II serial number [SIN]: 8530104213), ASL02 (Overlook Park Lower Fence Gate; DustTrak II SIN: 8530183802), ASL03 (North River Fence; DustTrak II SIN: 8530241807), and ASL04 (Exterior Colt Gun Building; DustTrak II SIN: 8530203306).
- Air stations consist of a DustTrak II with a particulate matter smaller than 10 microns in diameter (PM10) impactor and a Gi!Air Plus for air asbestos air sampling.

0 25 50 100 150 200 Feet

A

September 20, 2024 Air Monitoring Location Map

Allied Textile Printing
Paterson, New Jersey

U.S. ENVIRONMENTAL PROTECTION AGENCY
SUPERFUND TECHNICAL ASSESSMENT
& RESPONSE TEAM VI

CONTRACT# 68HE0325D0001

GIS ANALYST:

EPA OSC: M. Tabacon

START/STOP:

CHARGE#:



Weston Solutions, Inc.
Federal East Division