

**Notes:**

<sup>1</sup>Results are preliminary.

<sup>2</sup>PCB concentrations are reported ppm.

<sup>3</sup>Sample points were selected to focus on actual oil stained areas or oil accumulation locations

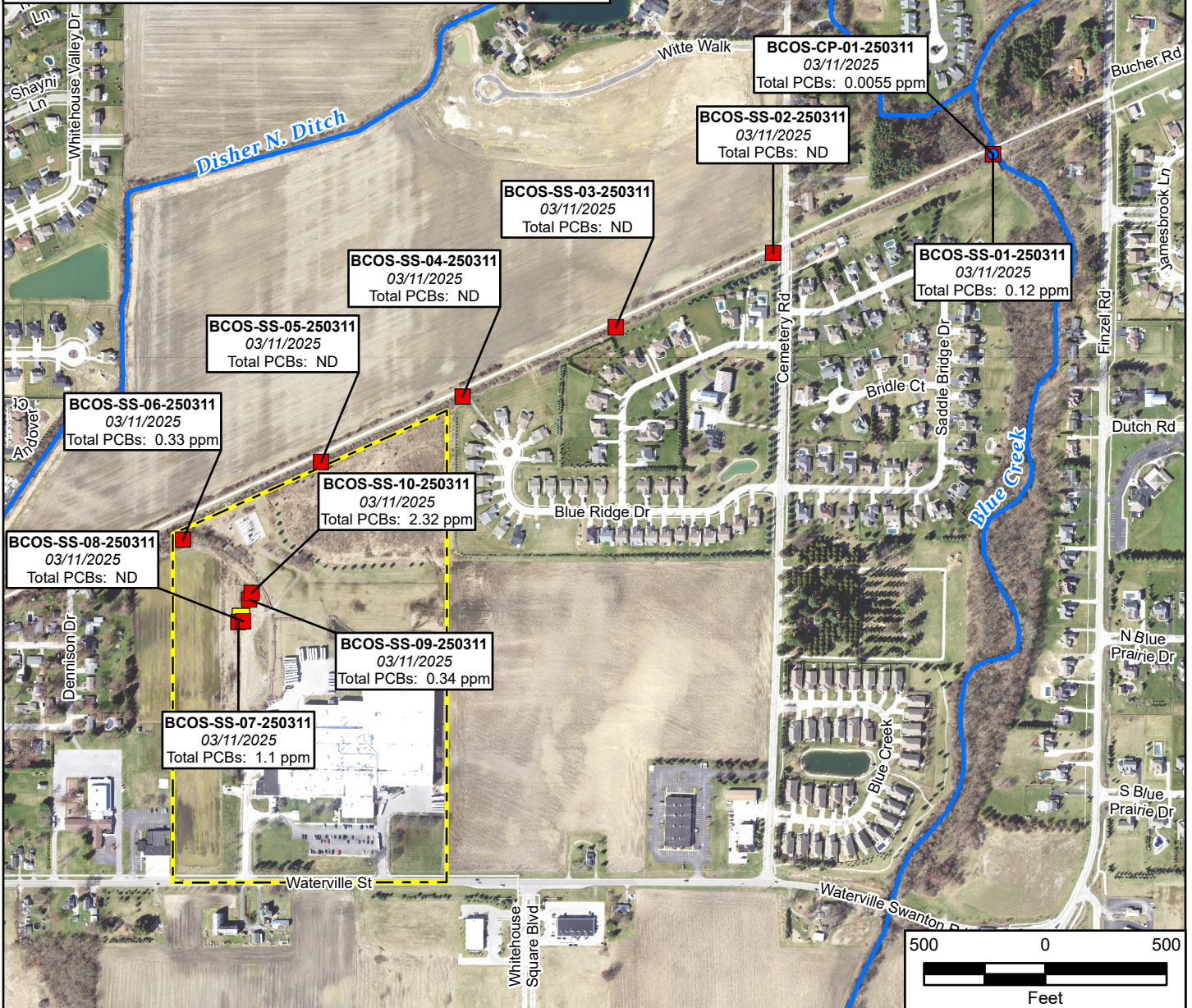
<sup>4</sup>This is not a property boundary survey. Property boundaries shown on this map are approximate based on existing available information and should not be used to establish property boundaries in the field.

**Definitions:**

ND Non-detection

PCB Polychlorinated biphenyl

ppm Parts per million

**Reference Map****Legend**

- Site Boundary<sup>4</sup>
- Area of Release/ Point of Origin
- Creeks/Ditches
- Sample Locations<sup>1,2,3</sup>
- Sample Matrix
  - Soil
  - Liquid



Service Layer Credits: Imagery: Lucas County GIS 2020;  
Roads, Waterways Lucas County Engineer's Office

Blue Creek Oil Spill Response  
10444 Waterville Street  
Whitehouse, Lucas County, Ohio

**Figure 3  
Sample PCB Results**

Prepared For: EPA

Prepared By: Tetra Tech Inc.