

EPA Emergency Response in Blue Creek

Update: March 14, 2025

Since March 7, EPA and the Whitehouse Fire Department have been responding to a hydraulic oil spill affecting Blue Creek and Swan Creek along the Wabash Cannonball Trail in Whitehouse. EPA requested the fire department close the trail starting at the fire station to Cemetery Road to allow crews access to the impacted waterways and soils.

Preliminary sample results show the presence of hydraulic oil and polychlorinated biphenyls, or PCBs, at very low levels in the oil, and at almost non-detectable levels in the soil and sediments of the drainage ditch along the trail. Because of these results (located on the map below), EPA will continue to collect oil in the waterway and continue the oil cleanup in the ditch along the trail, where needed. During cleanup, the area will remain closed to the public and EPA recommends residents stay out of the trail ditch and Blue and Swan Creeks. The agency anticipates cleanup will take up to two weeks to complete.

EPA has installed collection structures to collect any contamination runoff in the event of rain or other weather. These collection structures have been placed along multiple points from the site of the oil spill to Blue Creek. EPA has begun collecting oil from puddles and waterways and placing it into large tanks to be sent to an approved disposal facility.

Residents will see increased truck traffic and crews working in the streams and along the banks. Excavation of some oil along the ditch is anticipated. Residents should stay out of sectioned off areas. EPA will continue to share more information when available on the website:

response.epa.gov/Blue_Creek_Oil_Spill.

Notes:

¹Results are preliminary.

²PCB concentrations are reported ppm.

³Sample points were selected to focus on actual oil stained areas or oil accumulation locations

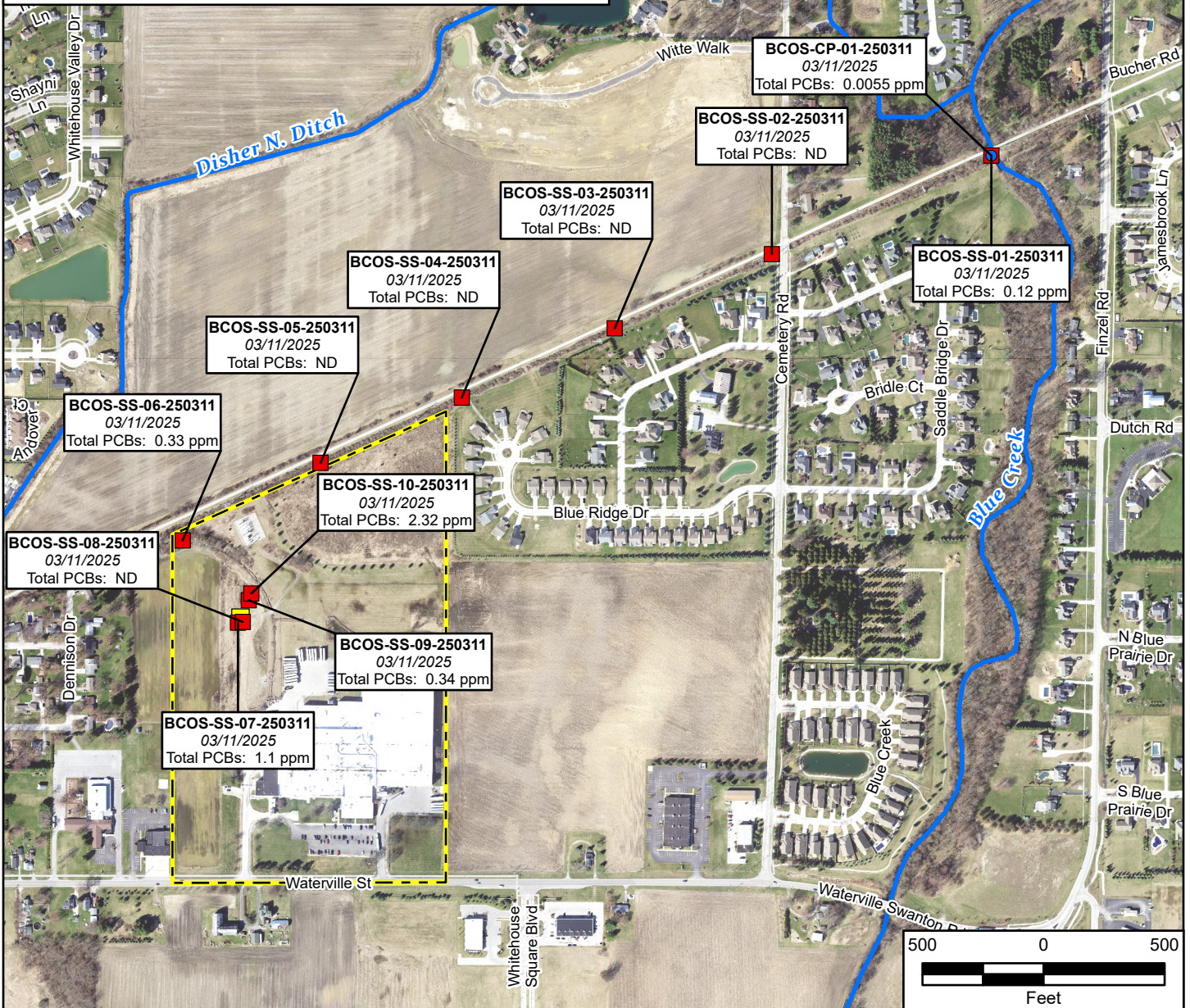
⁴This is not a property boundary survey. Property boundaries shown on this map are approximate based on existing available information and should not be used to establish property boundaries in the field.

Definitions:

ND Non-detection

PCB Polychlorinated biphenyl

ppm Parts per million

**Reference Map****Legend**

- Site Boundary⁴
- Area of Release/ Point of Origin
- Creeks/Ditches
- Sample Locations^{1,2,3}
- Sample Matrix
 - Soil
 - Liquid



Service Layer Credits: Imagery: Lucas County GIS 2020;
Roads, Waterways Lucas County Engineer's Office

Blue Creek Oil Spill Response
10444 Waterville Street
Whitehouse, Lucas County, Ohio

**Figure 3
Sample PCB Results**

Prepared For: EPA

Prepared By: Tetra Tech Inc.