

**Table 1: Weekly Perimeter Air Monitoring Summary**  
**Allied Textile Printing Site**  
**Paterson, Passaic County, New Jersey**  
**June 16 through 19 2025**

Date	Air Monitoring Instrument Number	Action Level Exceeded? <sup>1</sup>	Work Day 15-Minute TWA Concentration Range (µg/m <sup>3</sup> )
16-June-25	ASL01	N	1.0 to 19.0
	ASL02	N	1.1 to 16.0
	ASL03	N	1.4 to 18.0
	ASL04	N	2.0 to 16.0
17-June-25	ASL01	N	1.0 to 30.0
	ASL02	N	1.0 to 28.0
	ASL03	N	1.0 to 28.0
	ASL04	N	1.0 to 35.0
18-June-25	ASL01	N	1.2 to 29.0
	ASL02	N	1.0 to 23.0
	ASL03	N	1.3 to 29.0
	ASL04	N	1.2 to 26.0
19-June-25	ASL01	N	1.0 to 13.0
	ASL02	N	1.0 to 11.0
	ASL03	N	1.1 to 7.0
	ASL04	N	1.0 to 12.0

**Notes:**

The EPA uses air monitors to track small particles in the air called PM<sup>10</sup>, which are less than 10 micrometers in size. These particles can include dust, dirt, smoke, or asbestos fibers. The air monitors measure the average amount of PM<sup>10</sup> in the air over 15 minutes. If the amount of PM<sup>10</sup> is above 150 µg/m<sup>3</sup>, the monitors alert the EPA and workers on-site. If this happens, all site activities will stop, results are reported to the EPA, and dust control measures are re-evaluated. It's important to note that high levels of PM<sup>10</sup> do not necessarily mean there is asbestos in the air. The monitors only measure the amount of particles, not what they are made of.

<sup>1</sup>Action level utilized on-site is currently 150 µg/m<sup>3</sup> with PM<sub>10</sub>, which is compared to the average air monitoring measurement over a 15-minute period. If the action level is exceeded for a 15-minute period, on-site safety procedures are to suspend site activities, report results to the EPA On-Scene Coordinator and re-evaluate dust suppression measures.

Air monitoring is not performed during inclement weather conditions/rain and thunderstorms.

Site activities will run on a four-day schedule starting 6/16/2025.

**Abbreviations:**

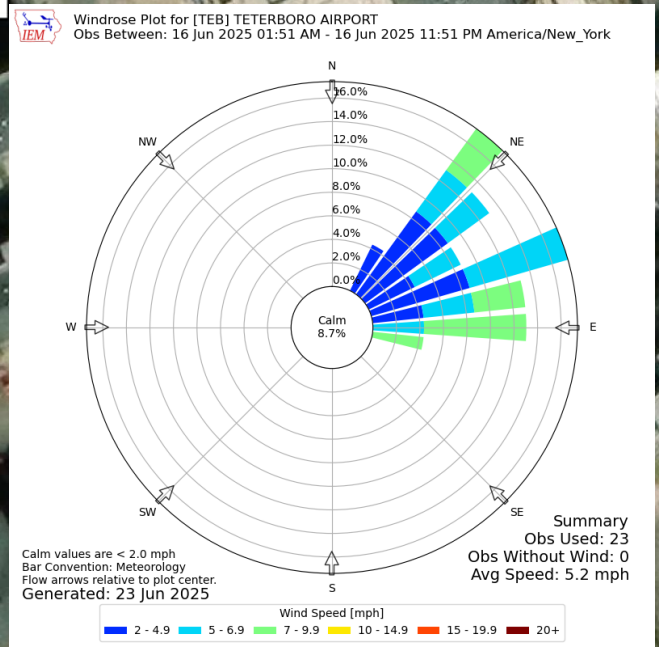
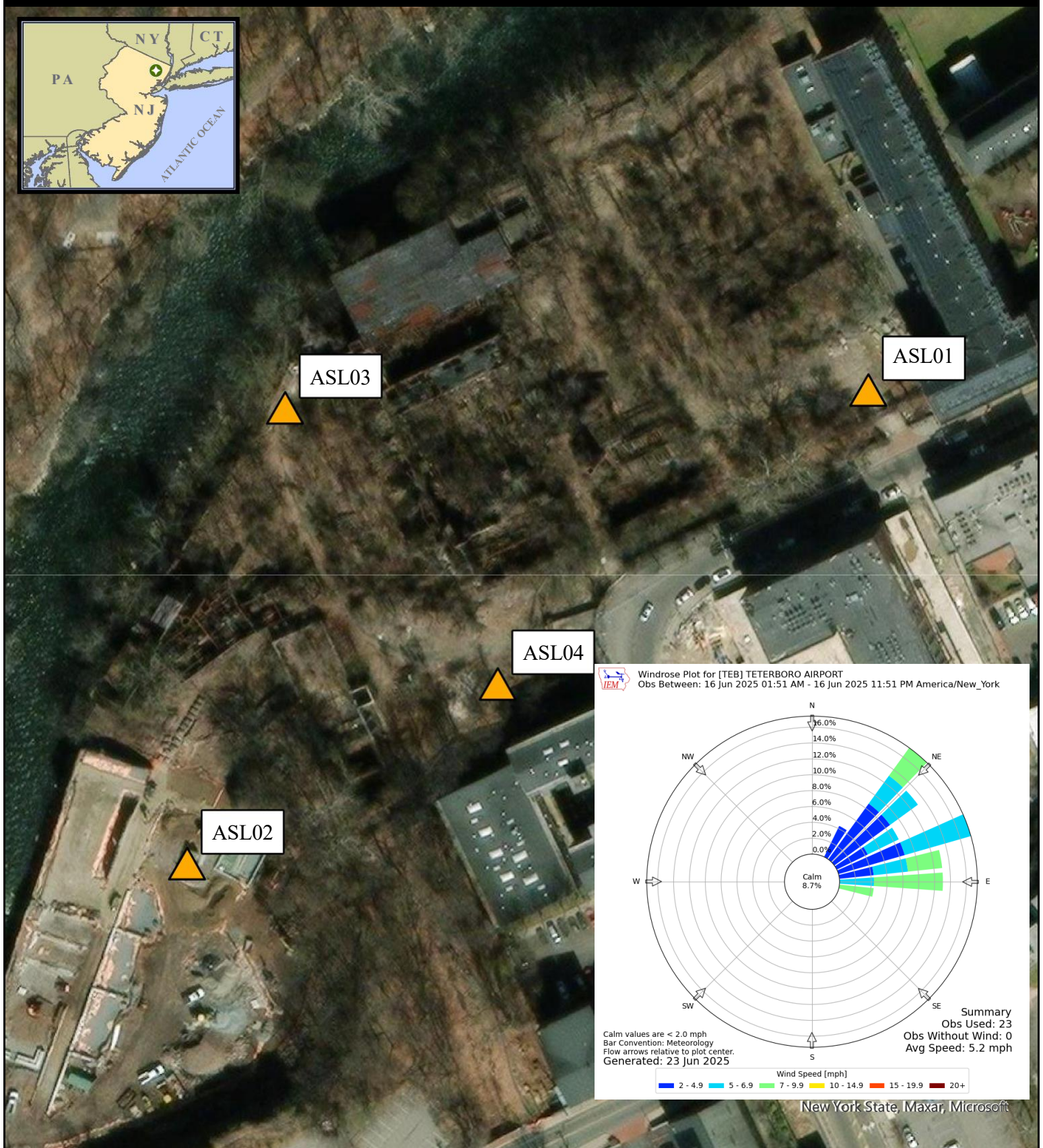
EPA - United State Environmental Protection Agency

µg/m<sup>3</sup> - Micrograms per meter cubed

PM<sub>10</sub> - Particulate Matter, diameter 10 micrometers and smaller

TWA- Time weighted average

ASL -Air Station Location



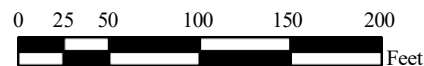
NewYork State, Maxar, Microsoft

### Legend

Air Monitoring Location

#### Notes:

1. Air monitoring locations are approximate.
2. ASL01 (North Gate),  
ASL02 (Overlook Park Lower Fence Gate),  
ASL03 (North River Fence),  
and ASL04 (Exterior Colt Gun Building/Decontamination Zone).
3. Air stations consist of a DustTrak II with a particulate matter smaller than 10 microns in diameter (PM10) impactor and a GilAir Plus for air asbestos air sampling.



### June 16th, 2025 Air Monitoring Location Map

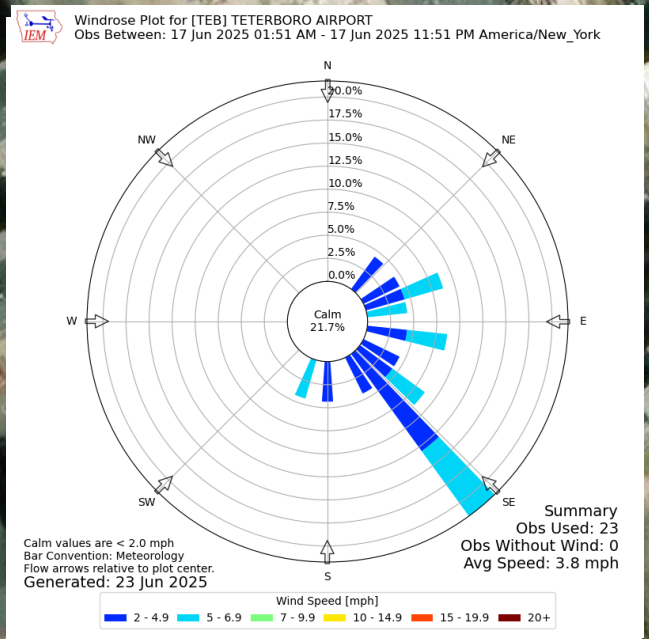
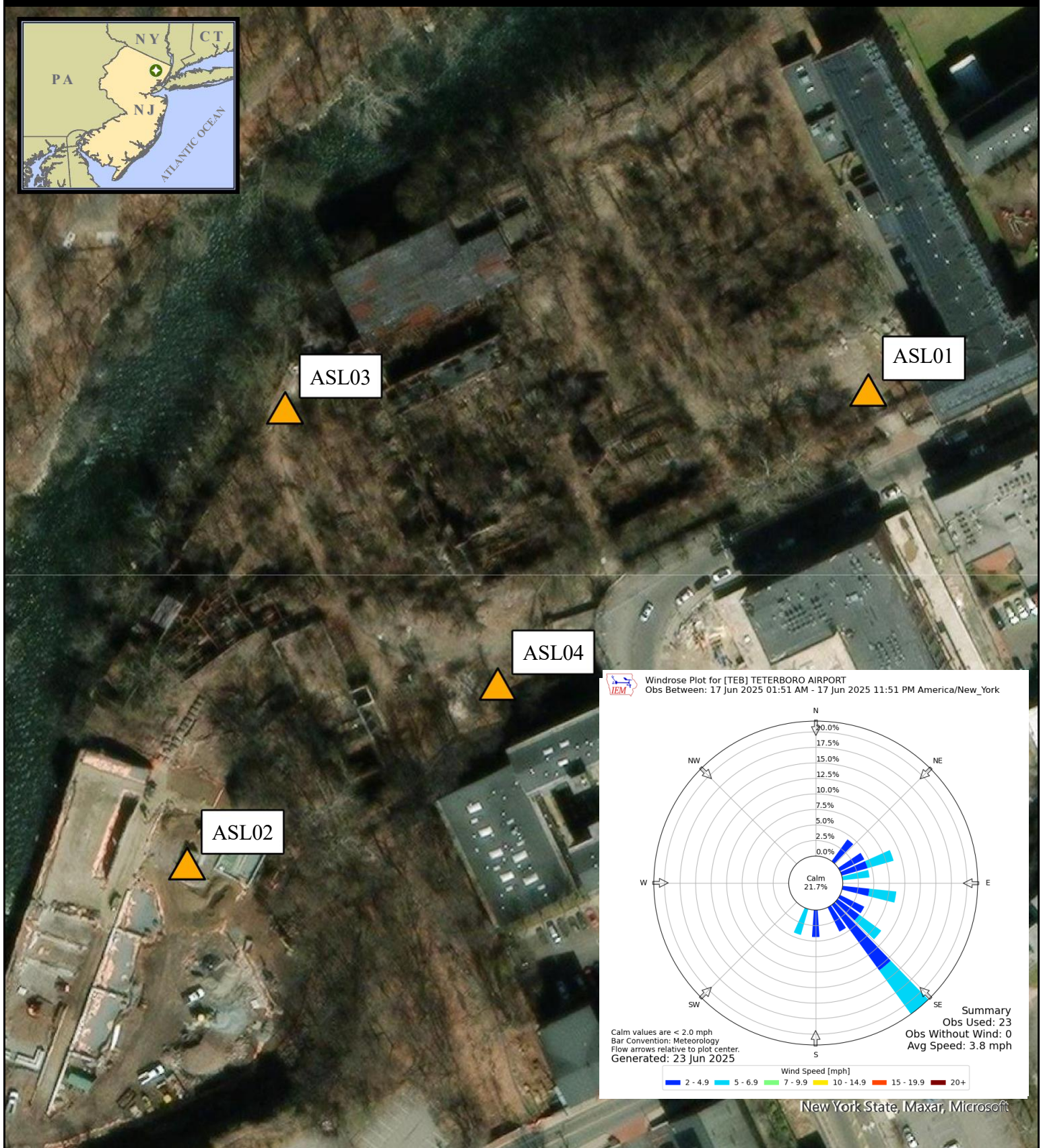
Allied Textile Printing  
Paterson, New Jersey

U.S. ENVIRONMENTAL PROTECTION AGENCY  
SUPERFUND TECHNICAL ASSESSMENT  
& RESPONSE TEAM VI  
CONTRACT # 68HE0325D0001

GIS ANALYST: \_\_\_\_\_  
EPA OSC: C. Groll  
SIARI V SPME: \_\_\_\_\_  
CHARGE #: \_\_\_\_\_

**WESTON SOLUTIONS** Weston Solutions, Inc.  
Federal East Division





New York State, Maxar, Microsoft

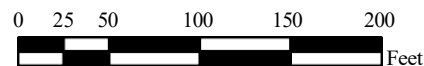
#### Legend



Air Monitoring Location

#### Notes:

1. Air monitoring locations are approximate.
2. ASL01 (North Gate),  
ASL02 (Overlook Park Lower Fence Gate),  
ASL03 (North River Fence),  
and ASL04 (Exterior Colt Gun Building/Decontamination Zone).
3. Air stations consist of a DustTrak II with a particulate matter smaller than 10 microns in diameter (PM10) impactor and a GilAir Plus for air asbestos air sampling.



#### June 17th, 2025 Air Monitoring Location Map

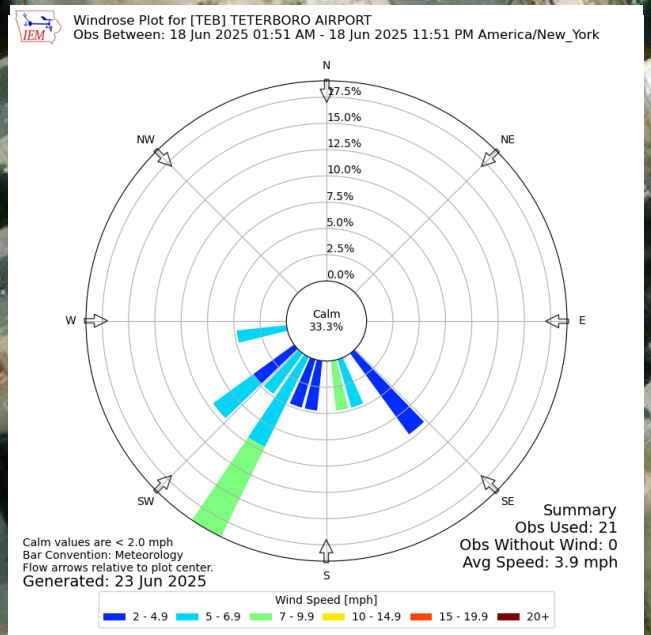
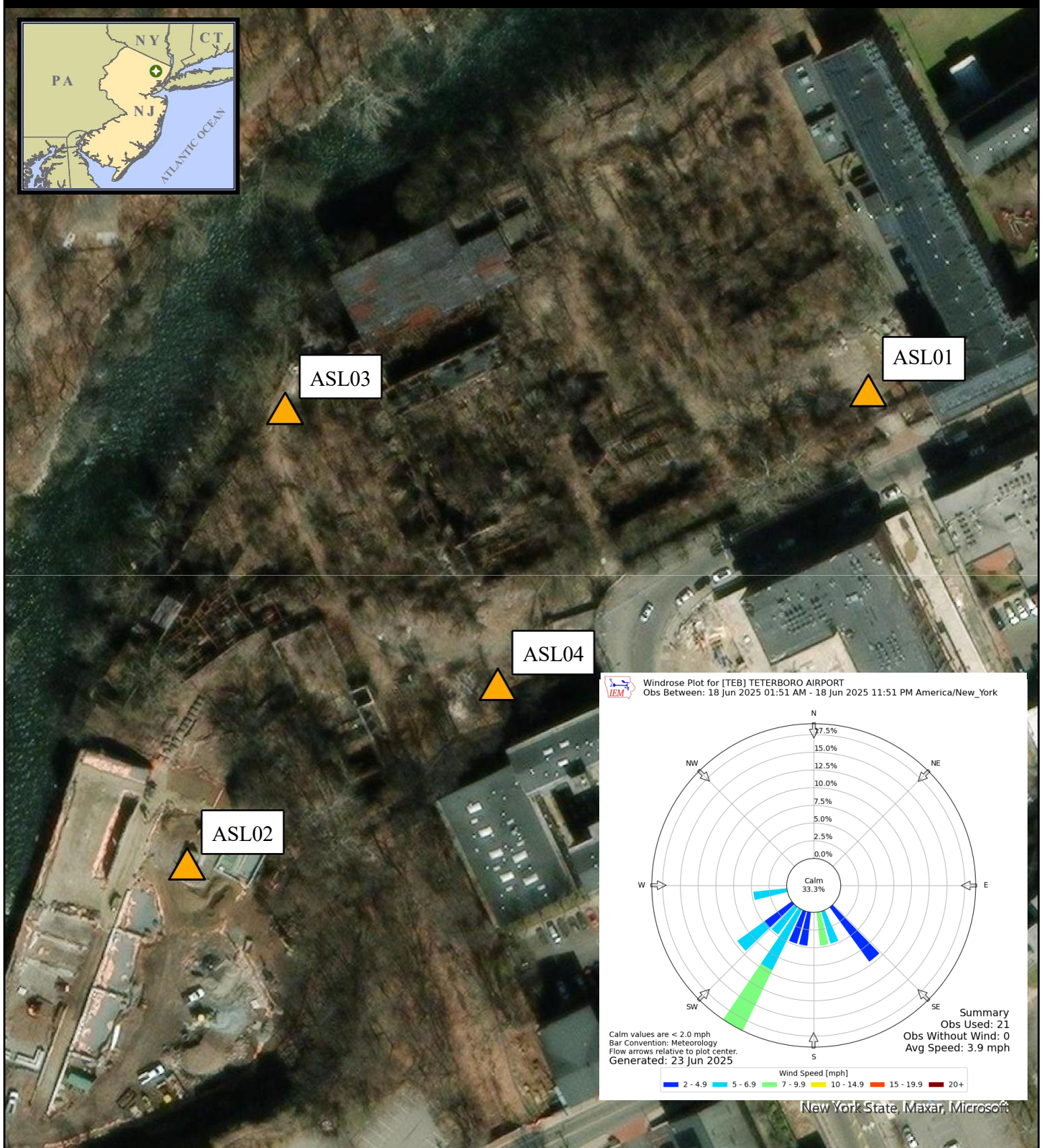
Allied Textile Printing  
Paterson, New Jersey

U.S. ENVIRONMENTAL PROTECTION AGENCY  
SUPERFUND TECHNICAL ASSESSMENT  
& RESPONSE TEAM VI  
CONTRACT # 68HE0325D0001

GIS ANALYST: \_\_\_\_\_  
EPA OSC: C. Grell  
SIARI V SPME: \_\_\_\_\_  
CHARGE #: \_\_\_\_\_

**WESTON SOLUTIONS** Weston Solutions, Inc.  
Federal East Division





New York State, Maxar, Microsoft

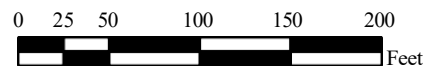
#### Legend



Air Monitoring Location

#### Notes:

1. Air monitoring locations are approximate.
2. ASL01 (North Gate),  
ASL02 (Overlook Park Lower Fence Gate),  
ASL03 (North River Fence),  
and ASL04 (Exterior Colt Gun Building/Decontamination Zone).
3. Air stations consist of a DustTrak II with a particulate matter smaller than 10 microns in diameter (PM10) impactor and a GilAir Plus for air asbestos air sampling.



#### June 18th, 2025 Air Monitoring Location Map

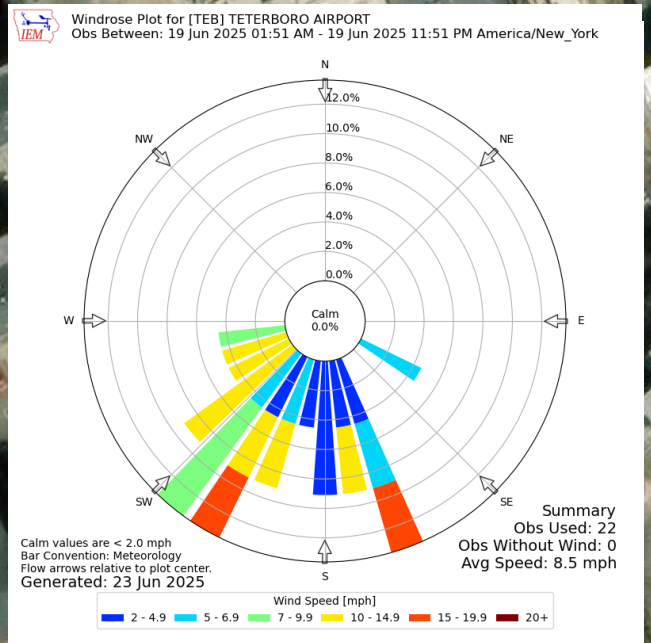
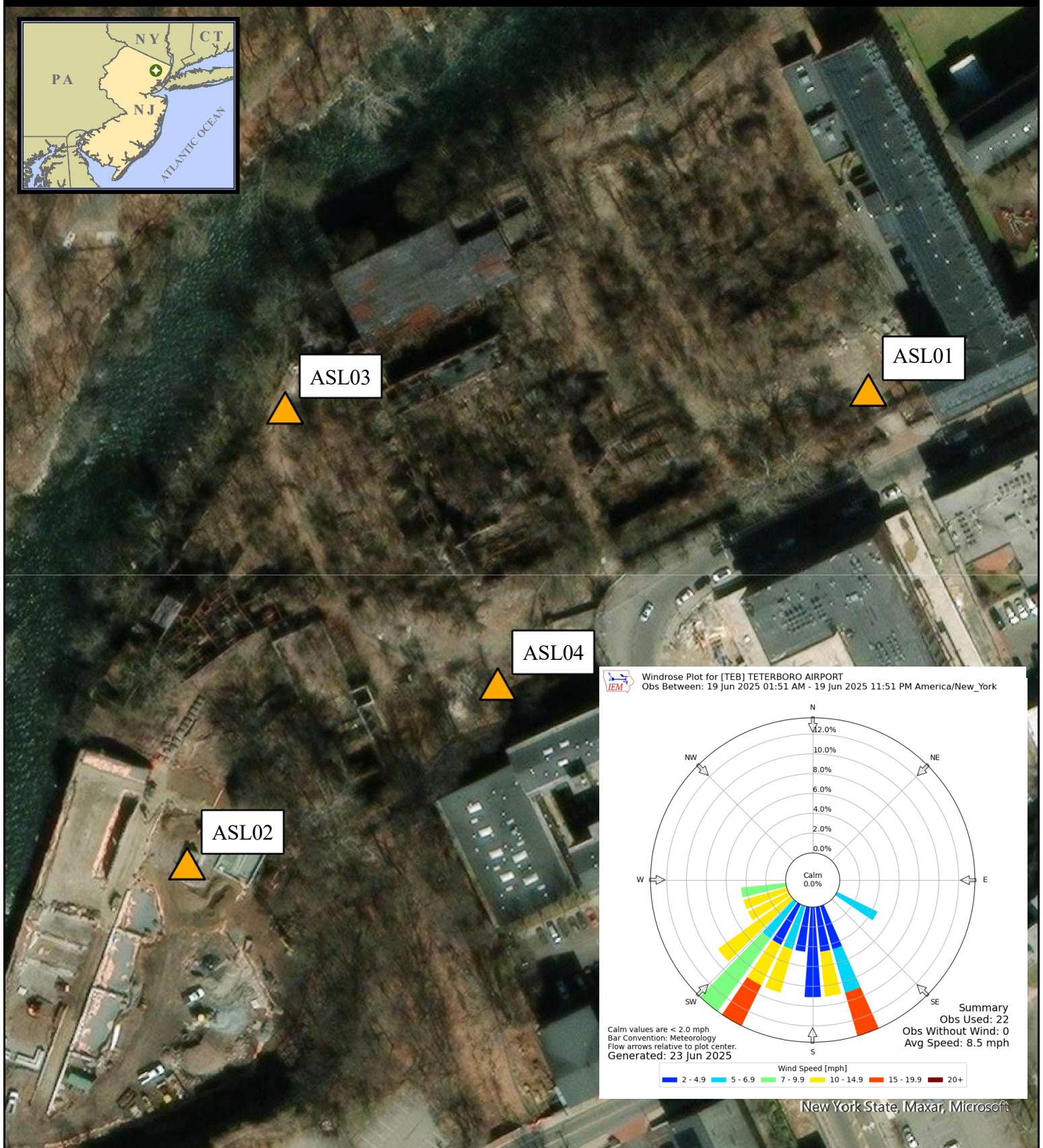
Allied Textile Printing  
Paterson, New Jersey

U.S. ENVIRONMENTAL PROTECTION AGENCY  
SUPERFUND TECHNICAL ASSESSMENT  
& RESPONSE TEAM VI  
CONTRACT # 68HE0325D0001

GIS ANALYST:	
EPA OSC:	C. Grell
SLARI V SPME:	
CHARGE #:	

**WESTON SOLUTIONS** Weston Solutions, Inc.  
Federal East Division





New York State, Maxar, Microsoft

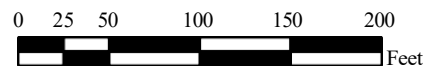
### Legend



Air Monitoring Location

#### Notes:

1. Air monitoring locations are approximate.
2. ASL01 (North Gate),  
ASL02 (Overlook Park Lower Fence Gate),  
ASL03 (North River Fence),  
and ASL04 (Exterior Colt Gun Building/Decontamination Zone).
3. Air stations consist of a DustTrak II with a particulate matter smaller than 10 microns in diameter (PM10) impactor and a GilAir Plus for air asbestos air sampling.



### June 19th, 2025 Air Monitoring Location Map

Allied Textile Printing  
Paterson, New Jersey

U.S. ENVIRONMENTAL PROTECTION AGENCY  
SUPERFUND TECHNICAL ASSESSMENT  
& RESPONSE TEAM VI  
CONTRACT # 68HE0325D0001

GIS ANALYST: \_\_\_\_\_  
EPA OSC: C. Grell  
SIARI V SPME: \_\_\_\_\_  
CHARGE #: \_\_\_\_\_

**WESTON SOLUTIONS** Weston Solutions, Inc.  
Federal East Division