

**Table 1: Weekly Perimeter Air Monitoring Summary**  
**Allied Textile Printing Site**  
**Paterson, Passaic County, New Jersey**  
**June 23 through 27 2025<sup>2</sup>**

Date	Air Monitoring Instrument Number	Action Level Exceeded? <sup>1</sup>	Work Day 15-Minute TWA Concentration Range (µg/m <sup>3</sup> )
23-June-25	ASL01	N	1.7 to 14.0
	ASL02	N	4.8 to 11.7
	ASL03	N	1.8 to 16.7
	ASL04	N	1.7 to 11.0
25-June-25	ASL01	N	1.0 to 15.0
	ASL02	N	1.0 to 12.0
	ASL03	N	1.0 to 15.0
	ASL04	N	1.0 to 17.0
26-June-25	ASL01	N	1.0 to 12.0
	ASL02	N	1.0 to 12.0
	ASL03	N	1.0 to 10.0
	ASL04	N	1.0 to 16.0
27-June-25	ASL01	N	1.4 to 16.0
	ASL02	N	1.0 to 14.0
	ASL03	N	1.3 to 16.0
	ASL04	N	1.4 to 21.0

**Notes:**

The EPA uses air monitors to track small particles in the air called PM<sup>10</sup>, which are less than 10 micrometers in size. These particles can include dust, dirt, smoke, or asbestos fibers. The air monitors measure the average amount of PM<sup>10</sup> in the air over 15 minutes. If the amount of PM<sup>10</sup> is above 150 µg/m<sup>3</sup>, the monitors alert the EPA and workers on-site. If this happens, all site activities will stop, results are reported to the EPA, and dust control measures are re-evaluated. It's important to note that high levels of PM<sup>10</sup> do not necessarily mean there is asbestos in the air. The monitors only measure the amount of particles, not what they are made of.

<sup>1</sup>Action level utilized on-site is currently 150 µg/m<sup>3</sup> with PM<sub>10</sub>, which is compared to the average air monitoring measurement over a 15-minute period. If the action level is exceeded for a 15-minute period, on-site safety procedures are to suspend site activities, report results to the EPA On-Scene Coordinator and re-evaluate dust suppression measures.

Air monitoring is not performed during inclement weather conditions/rain and thunderstorms.

<sup>2</sup> Due to equipment maintenance, air monitoring and air sampling instruments were not deployed June 24<sup>th</sup> as no intrusive site work was performed

**Abbreviations:**

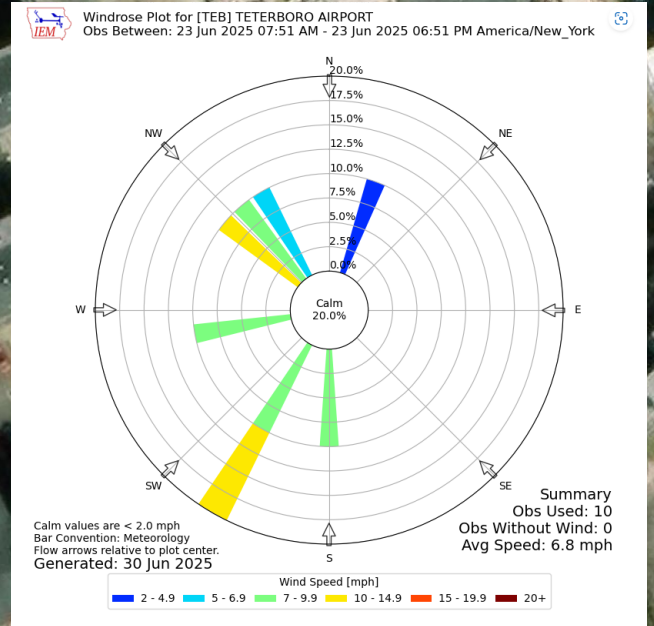
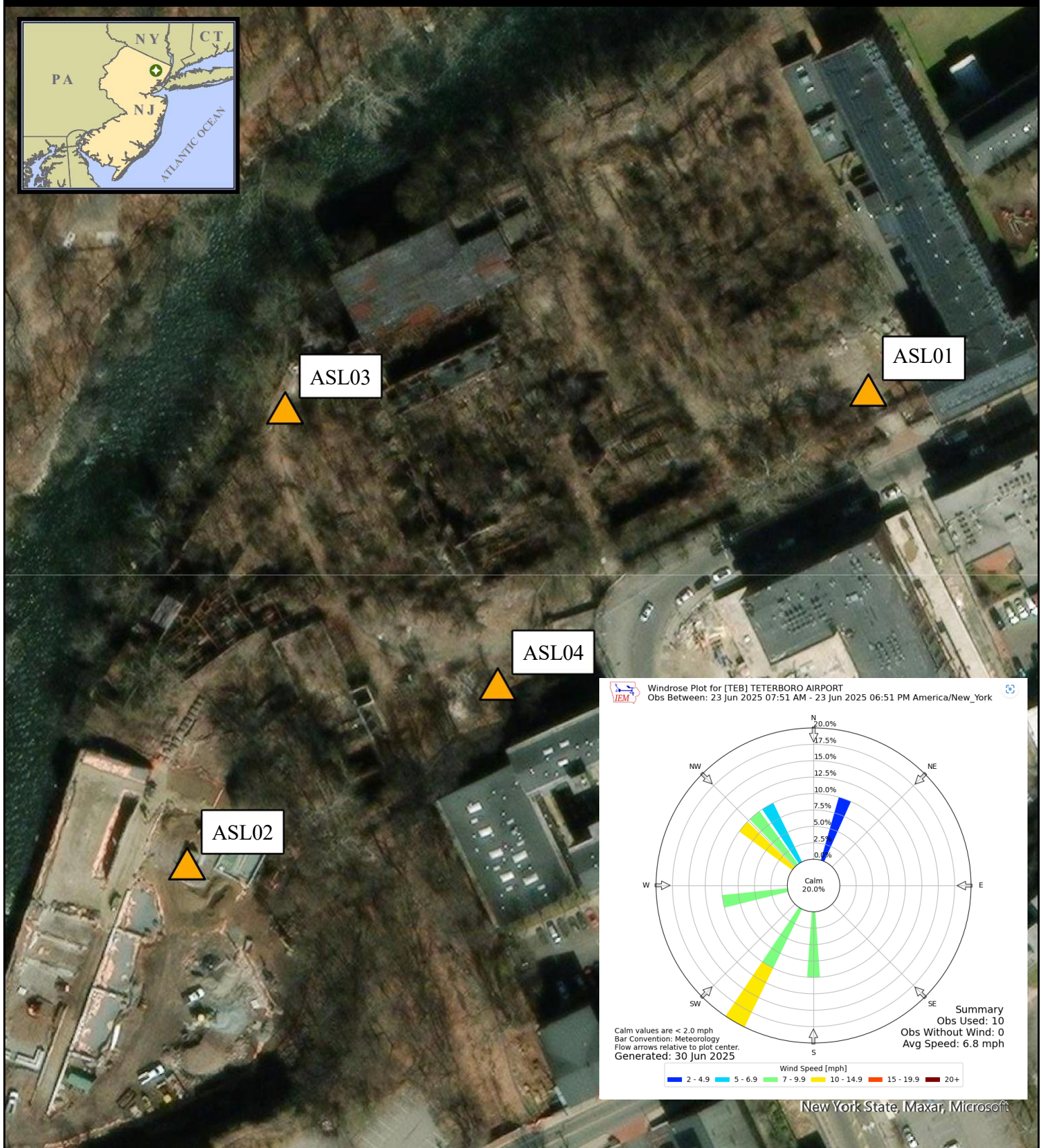
EPA - United State Environmental Protection Agency

µg/m<sup>3</sup> - Micrograms per meter cubed

PM<sub>10</sub> - Particulate Matter, diameter 10 micrometers and smaller

TWA- Time weighted average

ASL -Air Station Location

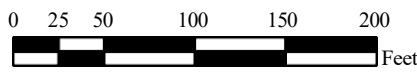


NewYork State, Maxar, Microsoft

### Legend

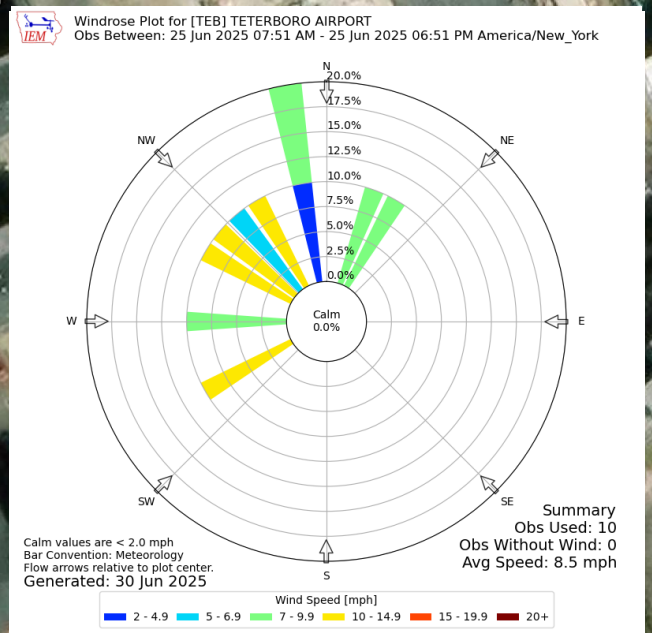
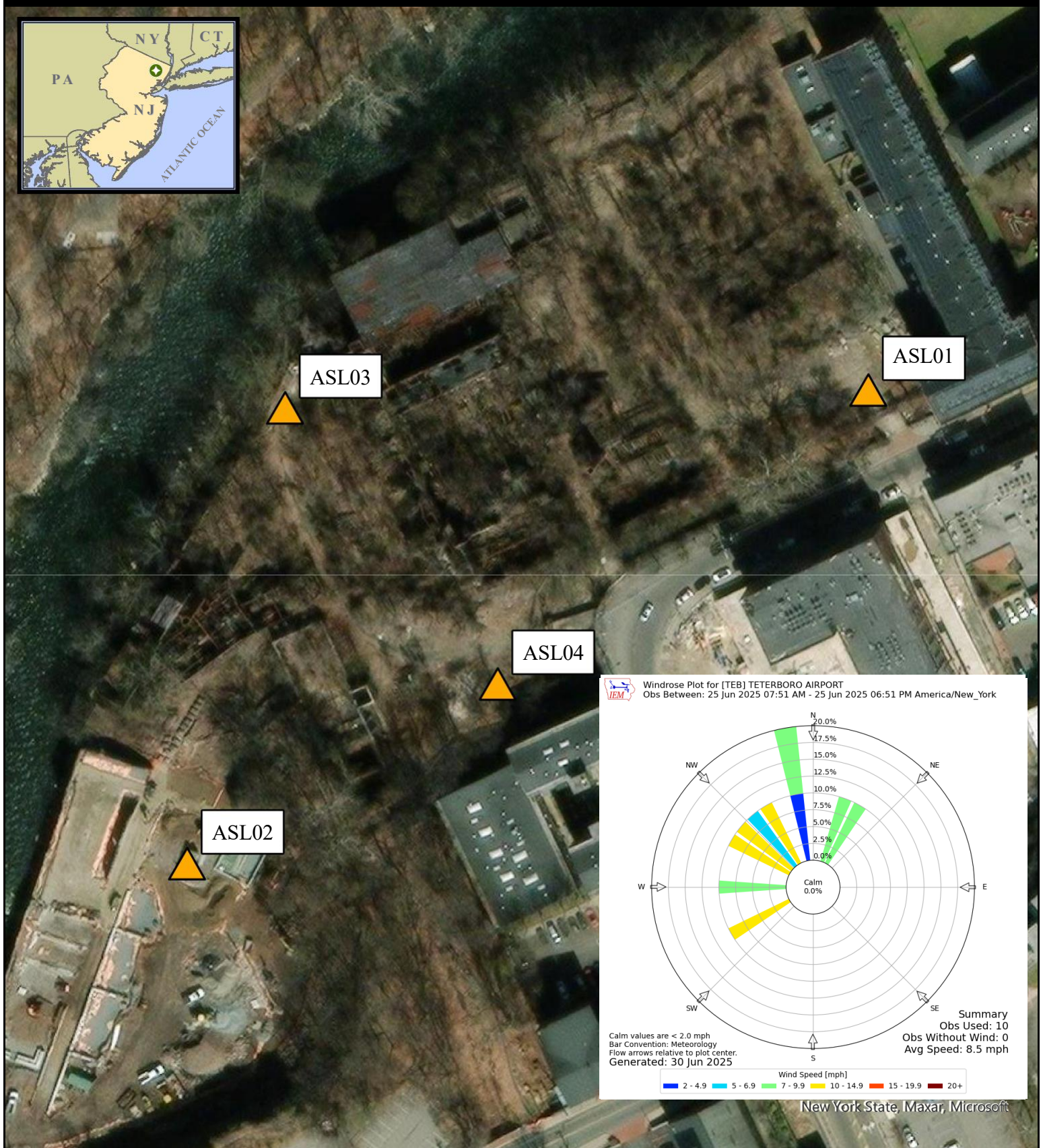
Air Monitoring Location

- Notes:
1. Air monitoring locations are approximate.
  2. ASL01 (North Gate),  
ASL02 (Overlook Park Lower Fence Gate),  
ASL03 (North River Fence),  
and ASL04 (Exterior Colt Gun Building/Decontamination Zone).
  3. Air stations consist of a DustTrak II with a particulate matter smaller than 10 microns in diameter (PM10) impactor and a GilAir Plus for air asbestos air sampling.



<b>June 23, 2025</b> <b>Air Monitoring Location Map</b>	
Allied Textile Printing Paterson, New Jersey	
U.S. ENVIRONMENTAL PROTECTION AGENCY SUPERFUND TECHNICAL ASSESSMENT & RESPONSE TEAM VI CONTRACT # 68HE032SD0001	
GIS ANALYST:	
EPA OSC:	C. Groll
SIARI V SPME:	
CHARGE #:	
<b>Weston Solutions, Inc.</b> Federal East Division	





New York State, Maxar, Microsoft

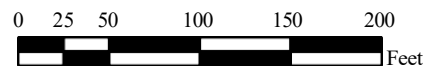
#### Legend



Air Monitoring Location

#### Notes:

1. Air monitoring locations are approximate.
2. ASL01 (North Gate),  
ASL02 (Overlook Park Lower Fence Gate),  
ASL03 (North River Fence),  
and ASL04 (Exterior Colt Gun Building/Decontamination Zone).
3. Air stations consist of a DustTrak II with a particulate matter smaller than 10 microns in diameter (PM10) impactor and a GilAir Plus for air asbestos air sampling.



#### June 25, 2025 Air Monitoring Location Map

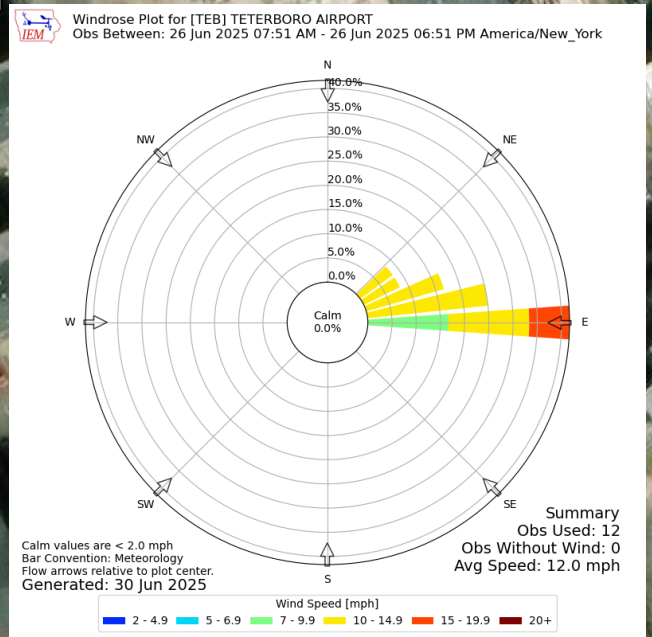
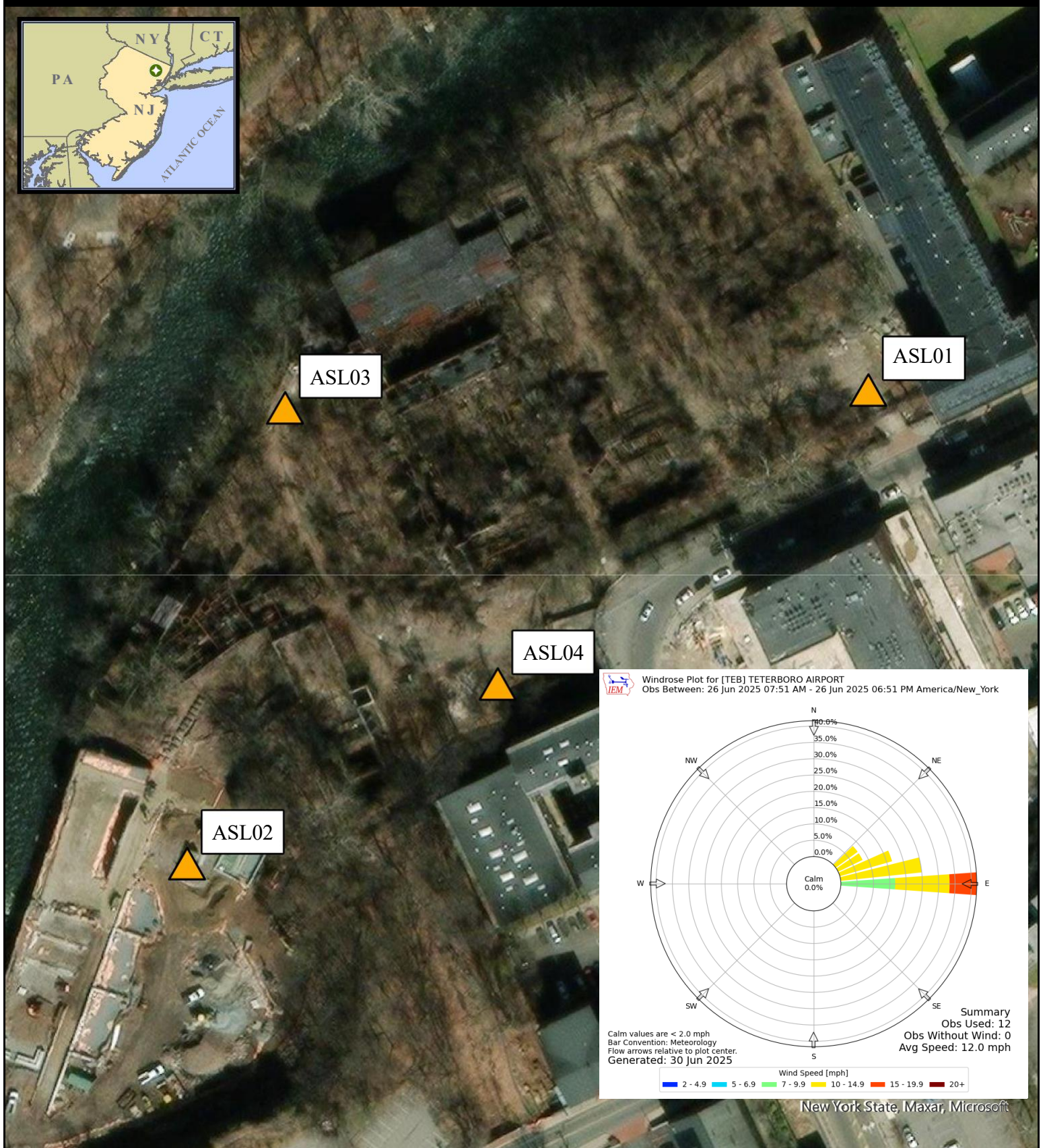
Allied Textile Printing  
Paterson, New Jersey

U.S. ENVIRONMENTAL PROTECTION AGENCY  
SUPERFUND TECHNICAL ASSESSMENT  
& RESPONSE TEAM VI  
CONTRACT # 68HE032SD0001

GIS ANALYST: \_\_\_\_\_  
EPA OSC: C. Grell  
SLART V SPME: \_\_\_\_\_  
CHARGE #: \_\_\_\_\_

**WESTON SOLUTIONS** Weston Solutions, Inc.  
Federal East Division





New York State, Maxar, Microsoft

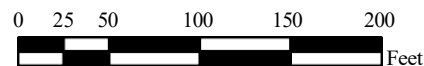
### Legend



Air Monitoring Location

### Notes:

1. Air monitoring locations are approximate.
2. ASL01 (North Gate),  
ASL02 (Overlook Park Lower Fence Gate),  
ASL03 (North River Fence),  
and ASL04 (Exterior Colt Gun Building/Decontamination Zone).
3. Air stations consist of a DustTrak II with a particulate matter smaller than 10 microns in diameter (PM10) impactor and a GilAir Plus for air asbestos air sampling.



### June 26, 2025 Air Monitoring Location Map

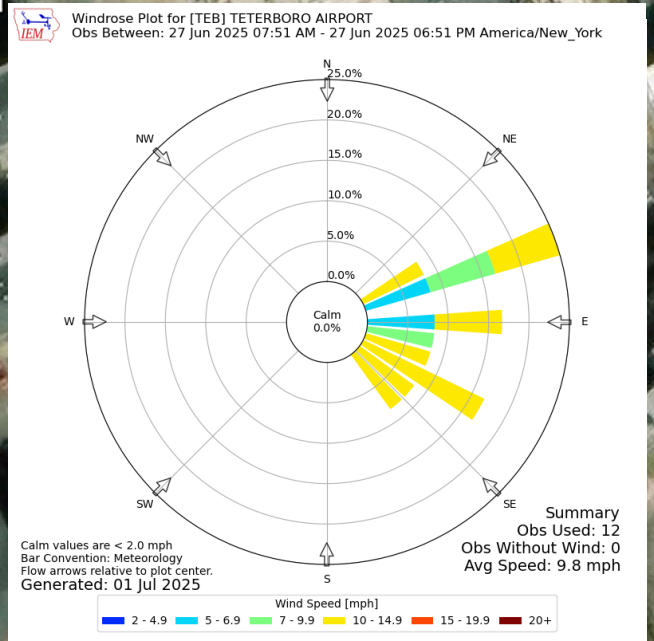
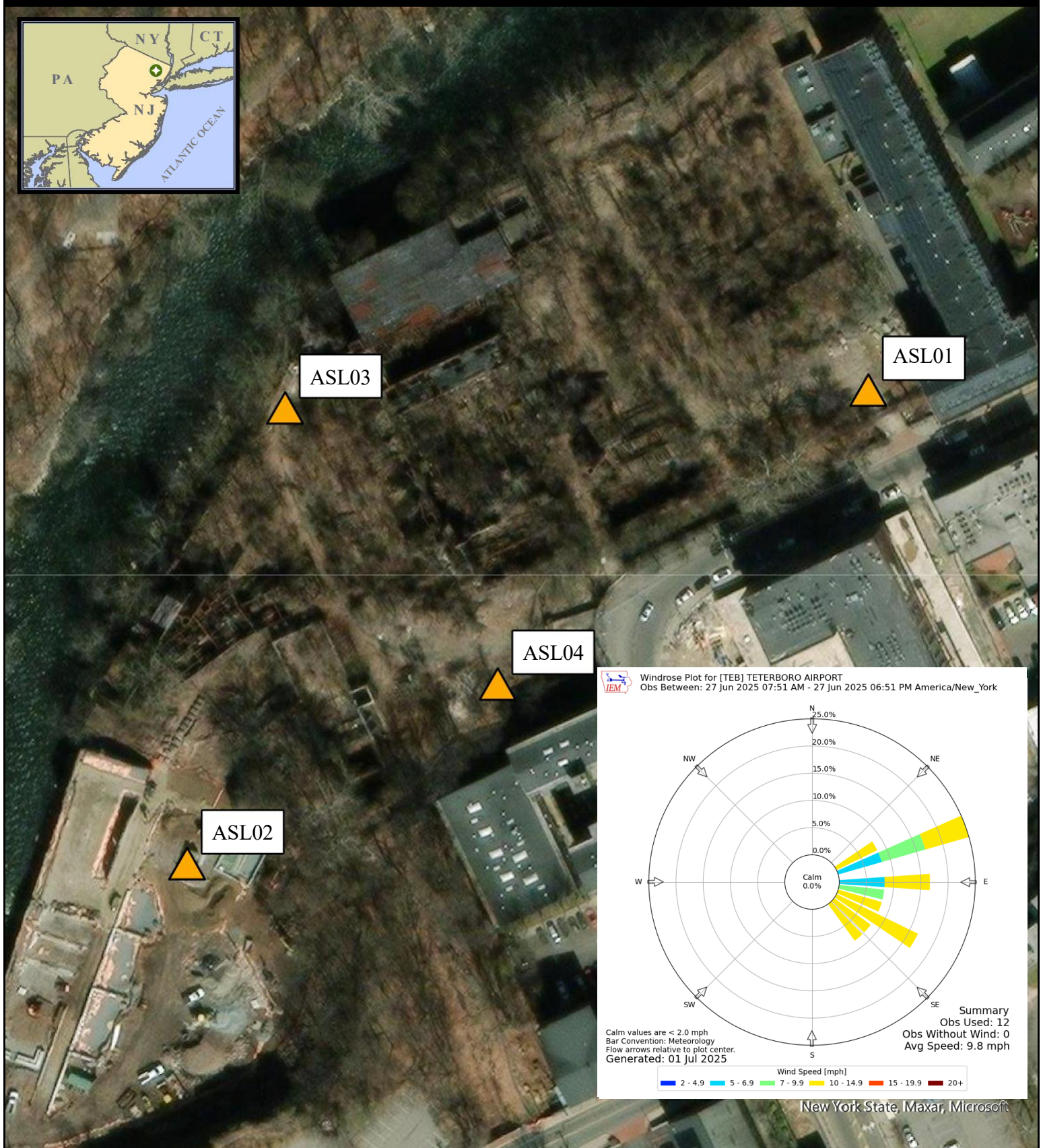
Allied Textile Printing  
Paterson, New Jersey

U.S. ENVIRONMENTAL PROTECTION AGENCY  
SUPERFUND TECHNICAL ASSESSMENT  
& RESPONSE TEAM VI  
CONTRACT # 68HE0325D0001

GIS ANALYST: \_\_\_\_\_  
EPA OSC: C. Grell  
SLART V SPME: \_\_\_\_\_  
CHARGE #: \_\_\_\_\_

**WESTON SOLUTIONS** Weston Solutions, Inc.  
Federal East Division



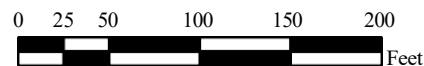


New York State, Maxar, Microsoft

### Legend

 Air Monitoring Location

- Notes:
1. Air monitoring locations are approximate.
  2. ASL01 (North Gate),  
ASL02 (Overlook Park Lower Fence Gate),  
ASL03 (North River Fence),  
and ASL04 (Exterior Colt Gun Building/Decontamination Zone).
  3. Air stations consist of a DustTrak II with a particulate matter smaller than 10 microns in diameter (PM10) impactor and a GilAir Plus for air asbestos air sampling.



### June 27, 2025 Air Monitoring Location Map

Allied Textile Printing  
Paterson, New Jersey

U.S. ENVIRONMENTAL PROTECTION AGENCY  
SUPERFUND TECHNICAL ASSESSMENT  
& RESPONSE TEAM VI  
CONTRACT # 68HE0325D0001

GIS ANALYST:	
EPA OSC:	C. Grell
SLART V SPME:	
CHARGE #:	

**WESTON SOLUTIONS** Weston Solutions, Inc.  
Federal East Division