

# **Environmental Protection Agency**

## **Region 7**

### **WCLD-Furnace Creek Google Earth Application**

#### **Quick Start Guide**

Version 1.2  
May, 2009



## Purpose

The purpose of this document is to instruct users on how to use the WCLD-Furnace Creek Site Google Earth application. This document is not designed to serve as a users guide for Google Earth, so if you have any questions regarding the installation or operation of Google Earth, please reference the help guide at the following web address (<http://earth.google.com/intl/en/userguide/v5/>).

## Downloading and Installing Google Earth 5.0

### *Minimum Computer System Requirements:*

- **Operating System: Windows 2000, Windows XP, or Windows Vista**
- **CPU: Pentium 3, 500Mhz**
- **System Memory (RAM): 256MB**
- **Hard Disk: 400MB free space**
- **Network Speed: 128 Kbits/sec**
- **Graphics Card: 3D-capable with 16MB of VRAM**

1. Navigate to the following website to download and install Google Earth 5.0.

➤ <http://earth.google.com/>

2. Once Google Earth 5.0 has completed installation, continue to the next step to download the WCLD-Furnace Creek Site (Version 1.2).kmz file.

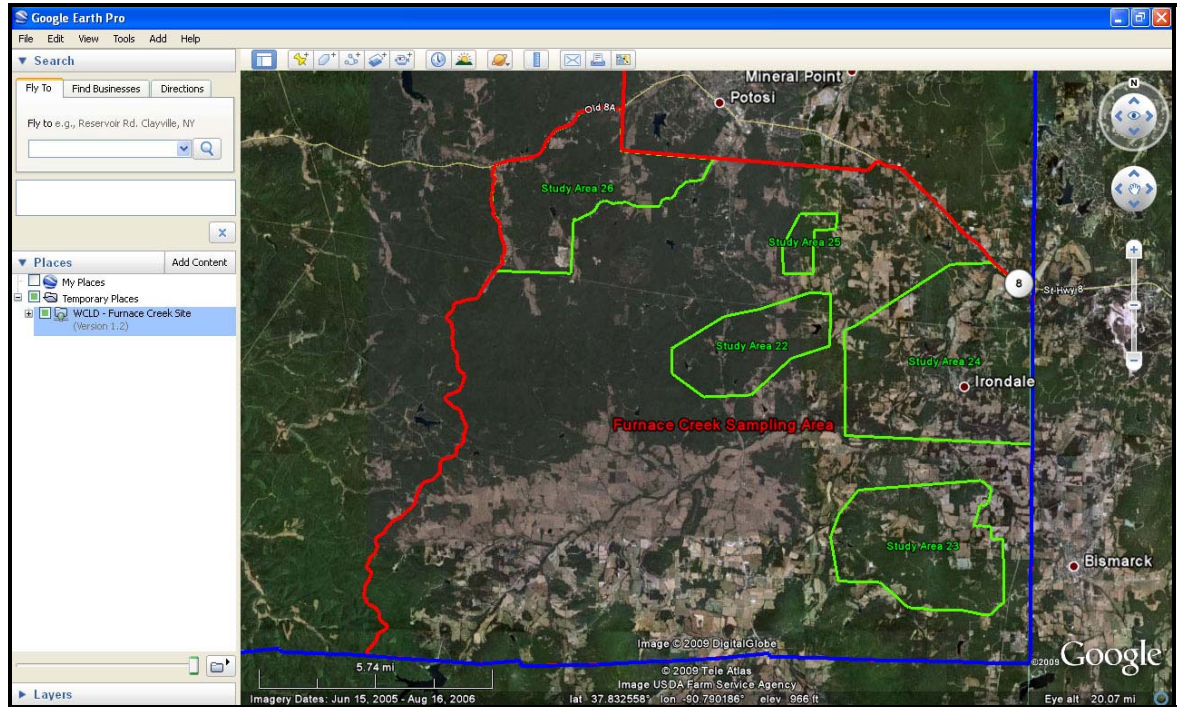
## Downloading the WCLD-Furnace Creek Site (Version 1.2).kmz File

1. Navigate to the following website to download the WCLD-Furnace Creek Site (Version 1.2).kmz file.

➤ [www.epaossc.org/furnacecreek](http://www.epaossc.org/furnacecreek)

2. Click on the “Documents” link that is located at both the top and bottom of the webpage.
3. Click on the WCLD-Furnace Creek Site (Version 1.2).kmz link located at the bottom of the documents list to download the Google Earth kmz file.
4. When prompted, either “Open” or “Save” the Google Earth kmz file.
  - If you choose to “Open” the kmz file, Google Earth will automatically launch and zoom to the Furnace Creek Sampling Area.
  - If you choose to “Save” the kmz file, you will need to navigate to the location of the saved file and double-click on the file to open it.

- Once the kmz file has loaded, you will notice that the WCLD-Furnace Creek Site (Version 1.2) file is displayed under the Temporary Places folder in the Places layers panel. Your Google Earth display should look similar to the one below:

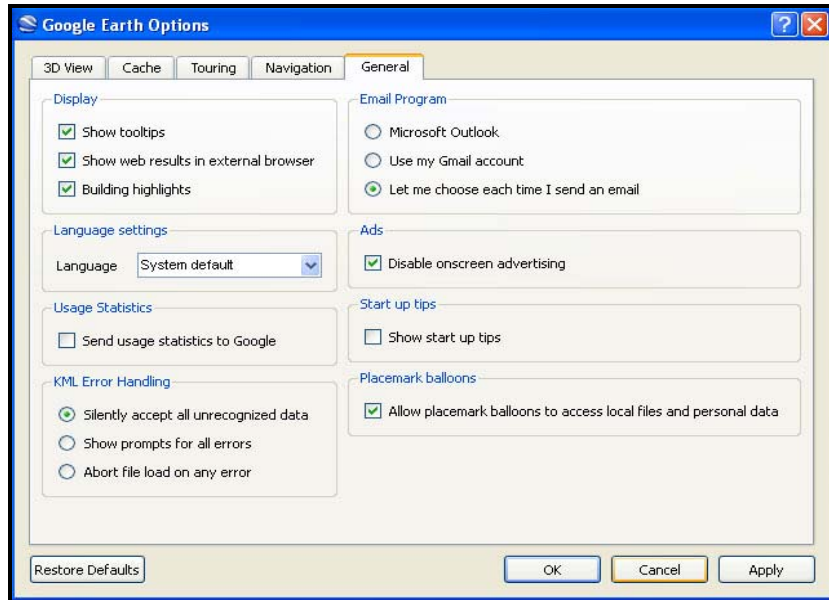


- To properly view the property documentation records, you must change a setting in Google Earth. Follow the directions below to set up your Google Earth program for optimal viewing of the property documentation records.

- From the Tools menu item, select Options.



- In the Google Earth Options window, click on the General tab.

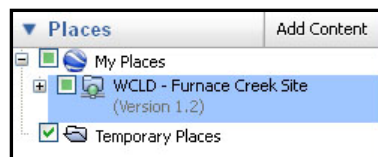
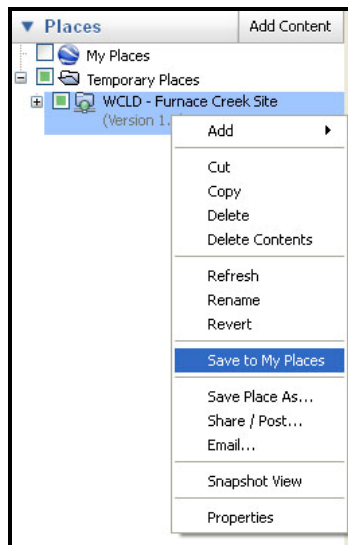


- Under the Display heading, click on the box for “Show web results in external browser” to check the box, and click Apply.
- Click OK to exit out of the Google Earth Options window.

## Saving the WCLD-Furnace Creek Site (Version 1.2).kmz File to My Places

**Note:** By saving the *WCLD-Furnace Creek Site (Version 1.2).kmz* file to the *My Places* folder in the *Places* layers panel, a user does not have to re-open the file again; therefore, every time you launch *Google Earth*, the *WCLD-Furnace Creek Site (Version 1.2).kmz* file will be located in the *My Places* folder.

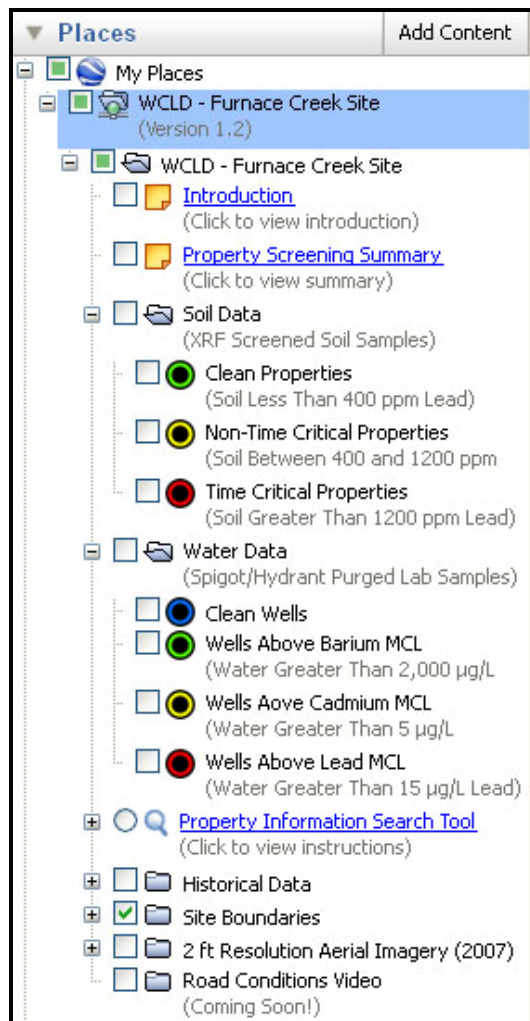
1. Right click on the *WCLD-Furnace Creek Site (Version 1.2)* file in the *Places* layers panel, of the *Temporary Places* folder and click on *Save to My Places*.




2. The WCLD-Furnace Creek Site (Version 1.2) file should now be located under the My Places folder in the Places layers panel.

## Navigating the WCLD-Furnace Creek Site (Version 1.2) Google Earth Application

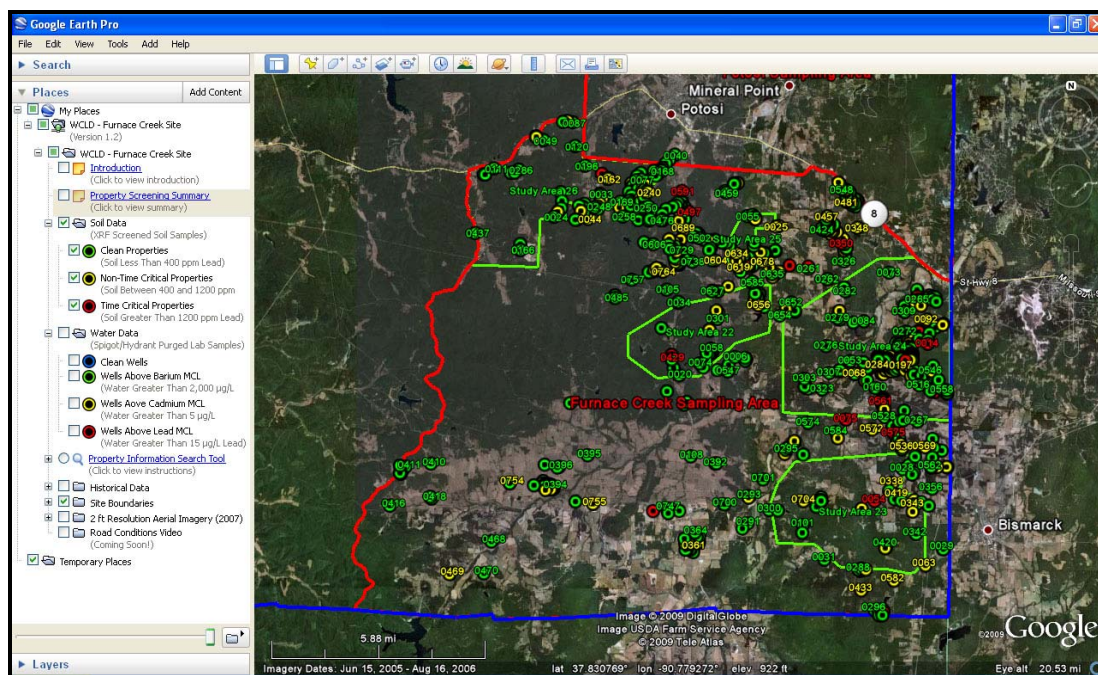
1. Click on the plus sign located to the left of the WCLD-Furnace Creek Site (Version 1.2).
2. Click on the plus sign located to the left of the WCLD-Furnace Creek Site folder.
3. Click on the plus signs located to the left of the Soil Data folder and the Water Data folder. Your Places panel should look similar to the image below.



4. Click on the blue Introduction link to view the introduction window. To close the introduction window, click on the  button in the top right-hand corner of the Introduction “popup” window.
5. Click on the blue Property Screening Summary link to view the property screening summary window.




- Turn on the soil data layers by clicking on the box located to the left of the Soil Data layer folder. The soil data layers will begin to populate in the Google Earth display window. Your Google Earth display window should look similar to the image below.



- Turn off all of the soil data layers except for the Time Critical Properties layer.
- Using your mouse or the navigation controls located in the right-hand corner of the Google Earth display window zoom to property 0054 located in study area 23.
- Using your mouse pointer, click on property 0054 to view the soil field screening placemark for that location. The placemark should look similar to the image below.

Washington County Lead District - Furnace Creek	
<b>Soil Field Screening</b> (Greater Than 1200 ppm Lead)	
Property ID:	0054
Property Type:	Residential
Property City:	Bismarck
Property Zip:	58102
Date Screened:	8/7/2008
Max Screening Result:	1287 ppm
Sub Location:	Driveway #1
Property Documentation:	<a href="http://www.tetratetech.com/Furnace%5CFurnacePublic/0054">http://www.tetratetech.com/Furnace%5CFurnacePublic/0054</a>
Website:	<a href="http://www.epa.gov/region7/">http://www.epa.gov/region7/</a>

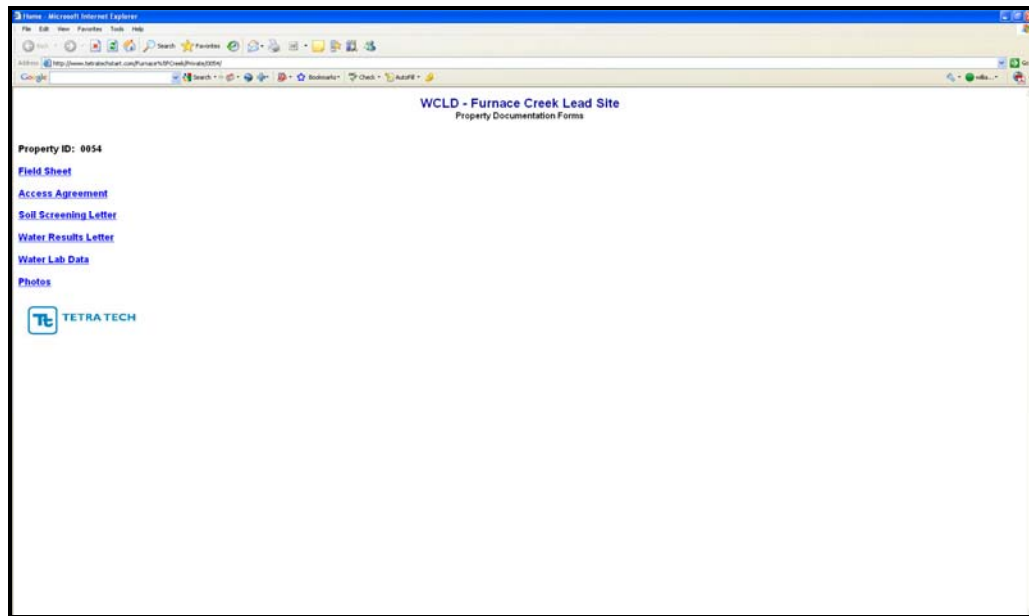


**TETRA TECH**  
water world. CLEAR SOLUTIONS.  
[www.tetratetech.com](http://www.tetratetech.com)

Please Note: The Environmental Protection Agency does not guarantee the accuracy, completeness, or timeliness of the information shown, and shall not be liable for any injury or loss resulting from the reliance upon the information above.

- Click on the “Property Documentation” link located within the soil field screening placemark to view all documents created for property 0054.

***Note: clicking on the “Property Documentation” link will open an external web browser. The first time you click on this link it may take 1-2 minutes for the web browser to open. Your web browser should look similar to the image below.***



- Click on the “Field Sheet” link to view the residential property screening form for property 0054.
- When finished viewing the property documentation forms, exit the web browser.
- Now that you understand the basics of the WCLD-Furnace Creek Site Google Earth Application, navigate the remaining layers included in this file.